

# SQRDL antibody



Catalog Number: 115659

## Product name

SQRDL antibody

IP: 1:200-1:2000

IHC: 1:20-1:200

## Specificity

Human, Mouse, Rat; other species not tested.

## Antibody description

SQRDL Rabbit Polyclonal antibody. Positive IHC detected in human brain tissue, human lung tissue, human spleen tissue, human testis tissue. Positive IP detected in HeLa cells. Positive WB detected in HepG2 cells, HeLa cells. Observed molecular weight by Western-blot: 50kd

## Preparation

This antibody was obtained by immunization of SQRDL recombinant protein (Accession Number: NM\_021199). Purification method: Antigen affinity purified.

## Formulation

PBS with 0.02% sodium azide and 50% glycerol pH 7.3.

## Storage

Store at -20°C. DO NOT ALIQUOT

## Clonality

Polyclonal

## Ig Type

Rabbit IgG

## Applications

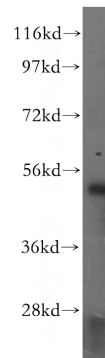
ELISA, WB, IHC, IP

## Dilutions

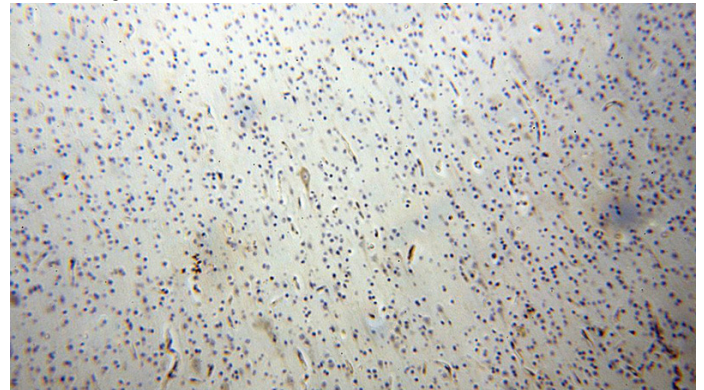
Recommended Dilution:

WB: 1:500-1:5000

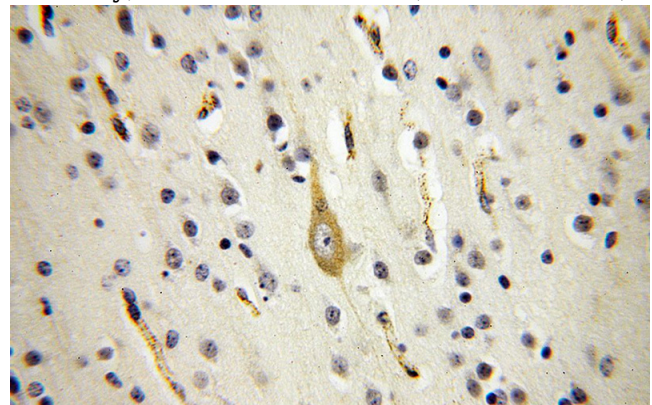
## Validations



HepG2 cells were subjected to SDS PAGE followed by western blot with Catalog No:115659(SQRDL antibody) at dilution of 1:500



Immunohistochemical of paraffin-embedded human brain using Catalog No:115659(SQRDL antibody) at dilution of 1:100 (under 10x lens)



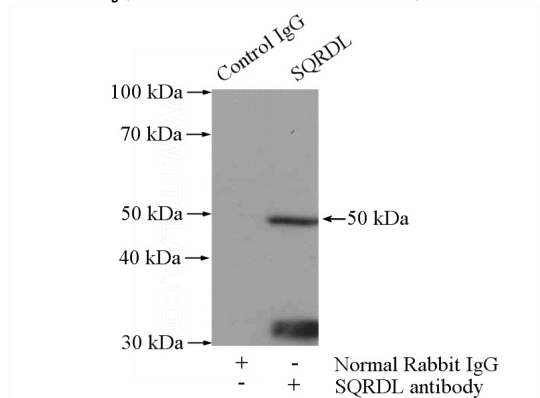
Immunohistochemical of paraffin-embedded human brain using Catalog No:115659(SQRDL

# SQRDL antibody

Catalog Number: 115659

---

antibody) at dilution of 1:100 (under 40x lens)



IP Result of anti-SQRDL (IP:Catalog No:115659, 4ug; Detection:Catalog No:115659 1:500) with HeLa cells lysate 2000ug.