

# SSR4 antibody

Catalog Number: 115609

## Product name

SSR4 antibody

IHC: 1:20-1:200

IF: 1:10-1:100

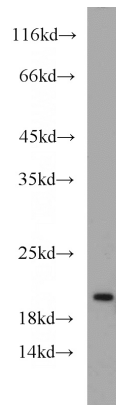
## Specificity

Human; other species not tested.

## Antibody description

SSR4 Rabbit Polyclonal antibody. Positive IF detected in HeLa cells. Positive IHC detected in human pancreas cancer tissue. Positive WB detected in HeLa cells, human placenta tissue. Observed molecular weight by Western-blot: 19kd

## Validations



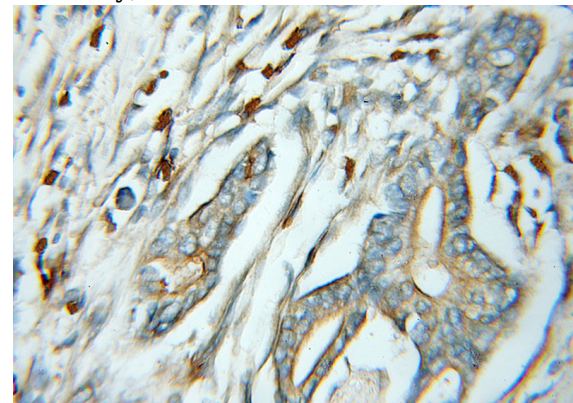
## Preparation

This antibody was obtained by immunization of SSR4 recombinant protein (Accession Number: NM\_006280). Purification method: Antigen affinity purified.

HeLa cells were subjected to SDS PAGE followed by western blot with Catalog No:115609(SSR4 antibody) at dilution of 1:500

## Formulation

PBS with 0.1% sodium azide and 50% glycerol pH 7.3.



## Storage

Store at -20°C. DO NOT ALIQUOT

## Clonality

Polyclonal

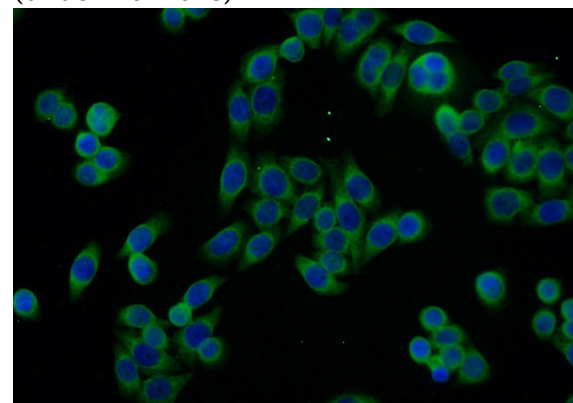
Immunohistochemical of paraffin-embedded human pancreas cancer using Catalog No:115609(SSR4 antibody) at dilution of 1:50 (under 10x lens)

## Ig Type

Rabbit IgG

## Applications

ELISA, IHC, WB, IF



## Dilutions

Recommended Dilution:

WB: 1:200-1:2000

Immunofluorescent analysis of HeLa cells using

# SSR4 antibody



Catalog Number: 115609

---

Catalog No:115609(SSR4 Antibody) at dilution of 1:25 and Alexa Fluor 488-conjugated AffiniPure Goat Anti-Rabbit IgG(H+L)