

# SRX1 antibody

Catalog Number: 115602

## Product name

SRX1 antibody

## Immunogen

[Human SRX1 Recombinant protein \(GST tag\)](#)

## Specificity

Human, Mouse; other species not tested.

## Antibody description

SRX1 Rabbit Polyclonal antibody. Positive WB detected in A549 cells, mouse liver tissue, Transfected HEK-293 cells. Positive IP detected in A549 cells. Positive IHC detected in human lung cancer tissue, human breast cancer tissue, human kidney tissue. Observed molecular weight by Western-blot: 14 kDa

## Preparation

This antibody was obtained by immunization of SRX1 recombinant protein (Accession Number: NM\_080725). Purification method: Antigen affinity purified.

## Formulation

PBS with 0.02% sodium azide and 50% glycerol pH 7.3.

## Storage

Store at -20°C. DO NOT ALIQUOT

## Clonality

Polyclonal

## Ig Type

Rabbit IgG

## Applications

ELISA, IP, IHC, WB

## Dilutions

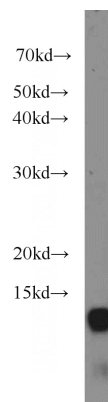
Recommended Dilution:

WB: 1:200-1:1000

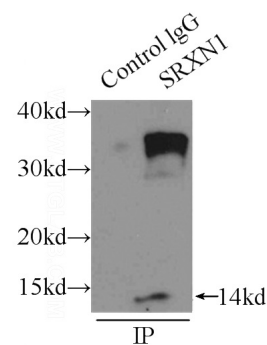
IP: 1:200-1:1000

IHC: 1:20-1:200

## Validations



A549 cells were subjected to SDS PAGE followed by western blot with Catalog No:115602(SRX1 antibody) at dilution of 1:400

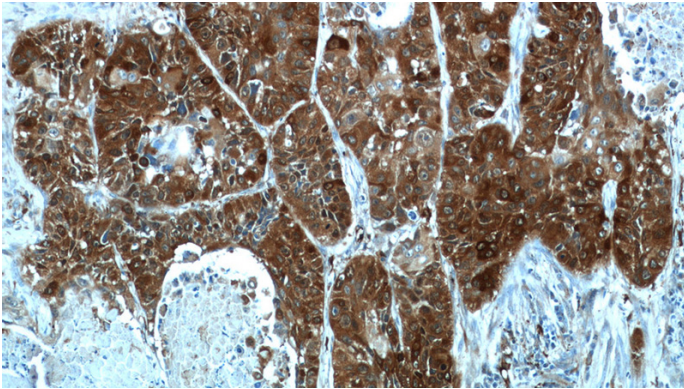


IP Result of anti-SRX1 (IP:Catalog No:115602, 3ug; Detection:Catalog No:115602 1:400) with A549 cells lysate 3300ug.

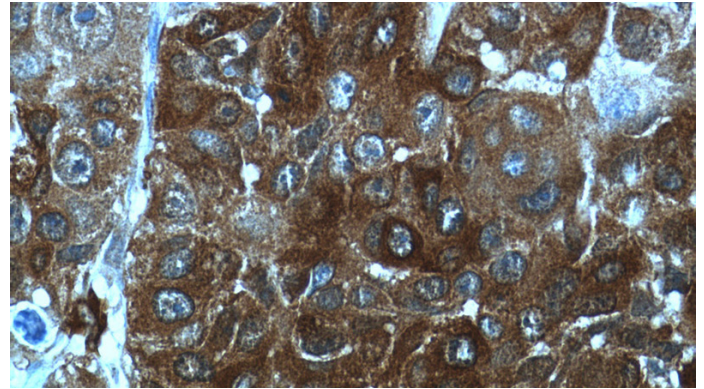
# SRX1 antibody

Catalog Number: 115602

---



Immunohistochemistry of paraffin-embedded human lung cancer tissue slide using Catalog No:115602(SRX1 Antibody) at dilution of 1:50 (under 10x lens)



Immunohistochemistry of paraffin-embedded human lung cancer tissue slide using Catalog No:115602(SRX1 Antibody) at dilution of 1:50 (under 40x lens)