

# SRPRB antibody



Catalog Number: 115598

---

## Product name

SRPRB antibody

## Specificity

human, mouse, rat; other species not tested.

## Antibody description

SRPRB Rabbit Polyclonal antibody. Positive WB detected in human liver tissue, HepG2 cells. Observed molecular weight by Western-blot: 30kd

## Preparation

This antibody was obtained by immunization of SRPRB recombinant protein (Accession Number: NM\_001379313). Purification method: Antigen affinity purified.

## Formulation

PBS with 0.02% sodium azide and 50% glycerol pH 7.3.

## Storage

Store at -20°C. DO NOT ALIQUOT

## Clonality

Polyclonal

## Ig Type

Rabbit IgG

## Applications

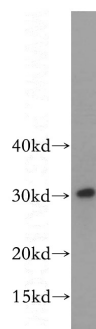
ELISA, WB

## Dilutions

Recommended Dilution:

WB: 1:200-1:2000

## Validations



human liver tissue were subjected to SDS PAGE followed by western blot with Catalog No:115598(SRPRB antibody) at dilution of 1:400