

# SRGAP3-Specific antibody



Catalog Number: 115588

## Product name

SRGAP3-Specific antibody

WB: 1:500-1:5000

IP: 1:200-1:2000

## Specificity

Human, Mouse, Rat; other species not tested.

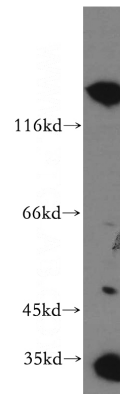
IHC: 1:20-1:200

IF: 1:10-1:100

## Antibody description

SRGAP3-Specific Rabbit Polyclonal antibody. Positive IF detected in Hela cells, HepG2 cells. Positive IHC detected in human brain tissue. Positive WB detected in mouse kidney tissue, mouse brain tissue, SH-SY5Y cells. Positive IP detected in mouse kidney tissue. Observed molecular weight by Western-blot: 36 kDa, 103 kDa, 125 kDa

## Validations



## Preparation

This antibody was obtained by immunization of Peptide (Accession Number: NM\_014850). Purification method: Antigen affinity purified.

mouse kidney tissue were subjected to SDS PAGE followed by western blot with Catalog No:115588(SRGAP3-Specific antibody) at dilution of 1:300

## Formulation

PBS with 0.02% sodium azide and 50% glycerol pH 7.3.

## Storage

Store at -20°C. DO NOT ALIQUOT

## Clonality

Polyclonal

## Ig Type

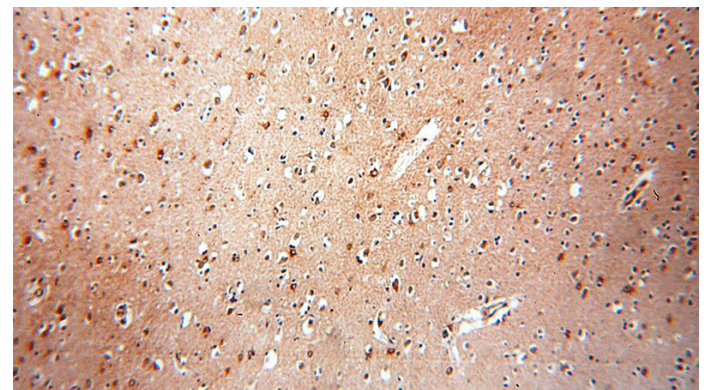
Rabbit IgG

## Applications

ELISA, WB, IHC, IF, IP

## Dilutions

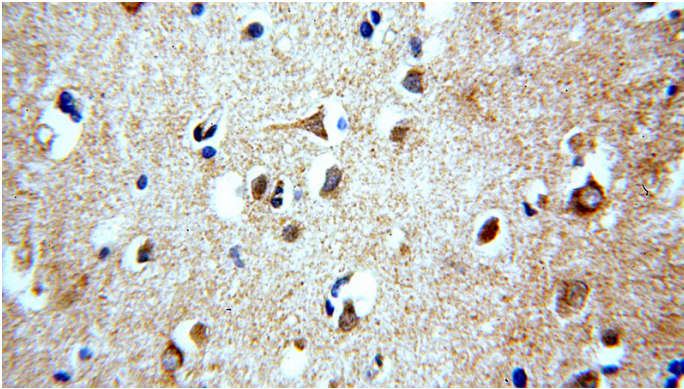
Recommended Dilution:



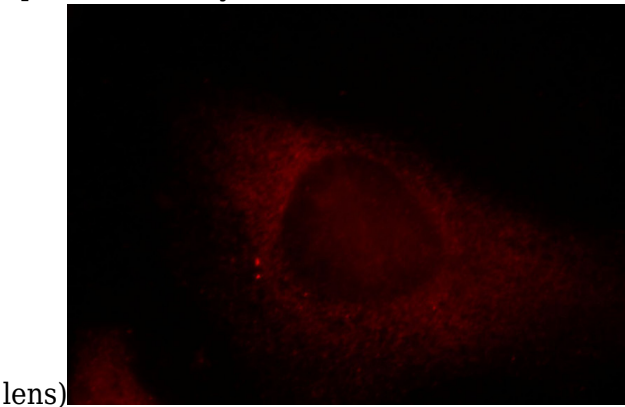
Immunohistochemical of paraffin-embedded human brain using Catalog No:115588(SRGAP3-Specific antibody) at dilution of 1:100 (under 10x lens)

# SRGAP3-Specific antibody

Catalog Number: 115588

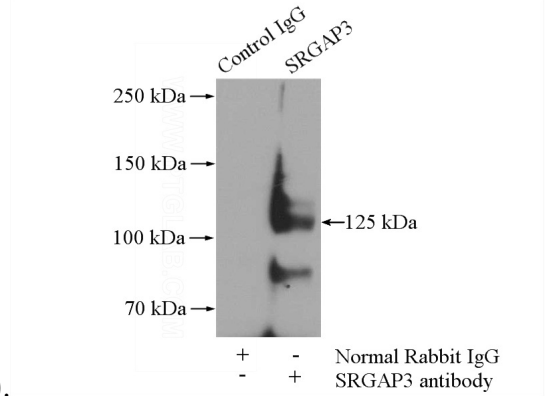


Immunohistochemical of paraffin-embedded human brain using Catalog No:115588(SRGAP3-Specific antibody) at dilution of 1:100 (under 40x



lens)

Immunofluorescent analysis of HeLa cells, using SRGAP3 antibody Catalog No:115588 at 1:25 dilution and Rhodamine-labeled goat anti-rabbit



IgG (red).

IP Result of anti-SRGAP3-Specific (IP:Catalog No:115588, 4ug; Detection:Catalog No:115588 1:800) with mouse kidney tissue lysate 4000ug.