

# SPON2 antibody

Catalog Number: 115580

## Product name

SPON2 antibody

## Specificity

Human; other species not tested.

## Antibody description

SPON2 Rabbit Polyclonal antibody. Positive IHC detected in human prostate cancer tissue, human prostate hyperplasia tissue.

## Preparation

This antibody was obtained by immunization of SPON2 recombinant protein (Accession Number: NM\_001199021). Purification method: Antigen affinity purified.

## Formulation

PBS with 0.1% sodium azide and 50% glycerol pH 7.3.

## Storage

Store at -20°C. DO NOT ALIQUOT

## Clonality

Polyclonal

## Ig Type

Rabbit IgG

## Applications

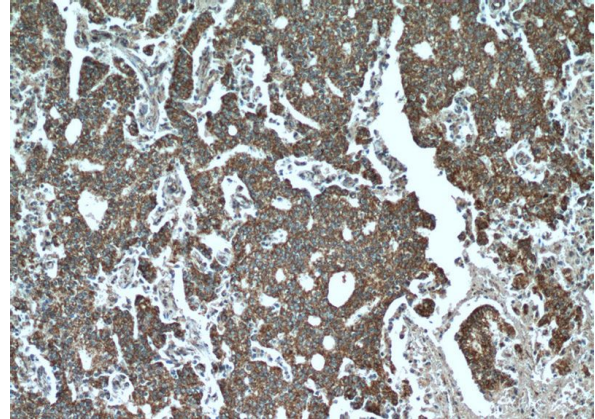
ELISA, IHC

## Dilutions

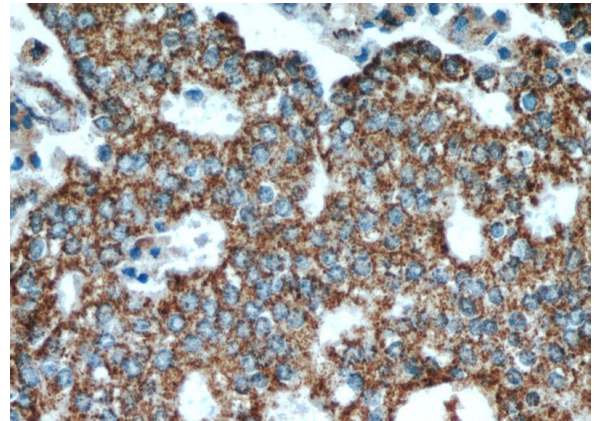
Recommended Dilution:

IHC: 1:20-1:200

## Validations



Immunohistochemical of paraffin-embedded human prostate cancer using Catalog No:115580(SPON2 antibody) at dilution of 1:50 (under 10x lens)



Immunohistochemical of paraffin-embedded human prostate cancer using Catalog No:115580(SPON2 antibody) at dilution of 1:50 (under 40x lens)