

# SPANXE antibody

Catalog Number: 115542

## Product name

SPANXE antibody

IHC: 1:20-1:200

IF: 1:20-1:200

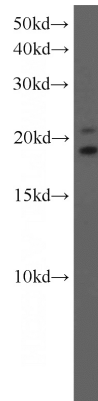
## Specificity

Human; other species not tested.

## Validations

## Antibody description

SPANXE Rabbit Polyclonal antibody. Positive IHC detected in human testis tissue. Positive IF detected in A375 cells. Positive WB detected in A375 cells, mouse skin tissue. Observed molecular weight by Western-blot: 15-20 kDa



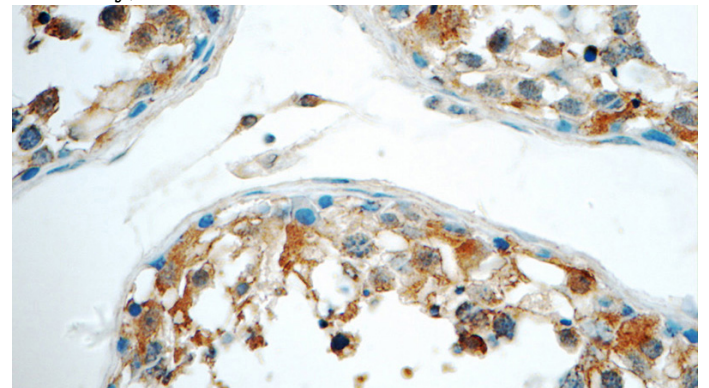
## Preparation

This antibody was obtained by immunization of SPANXE recombinant protein (Accession Number: NM\_022661). Purification method: Antigen affinity purified.

A375 cells were subjected to SDS PAGE followed by western blot with Catalog No:115542(SPANXE antibody) at dilution of 1:300

## Formulation

PBS with 0.1% sodium azide and 50% glycerol pH 7.3.



## Storage

Store at -20°C. DO NOT ALIQUOT

## Clonality

Polyclonal

Immunohistochemistry of paraffin-embedded human testis tissue slide using Catalog No:115542(SPANXE Antibody) at dilution of 1:50 (under 40x lens)

## Ig Type

Rabbit IgG

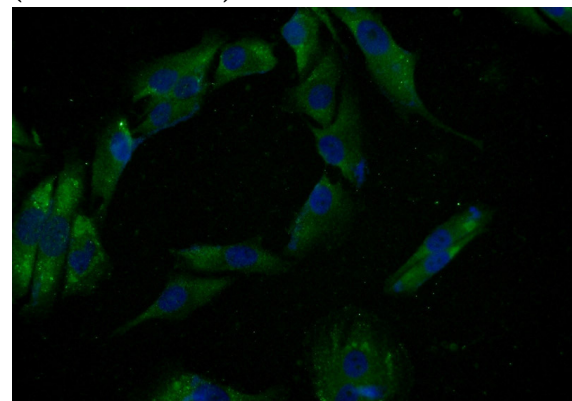
## Applications

ELISA, WB, IHC, IF

## Dilutions

Recommended Dilution:

WB: 1:200-1:1000



Immunofluorescent analysis of A375 cells using

# SPANXE antibody



Catalog Number: 115542

---

Catalog No:115542(SPANXE Antibody) at dilution of 1:50 and Alexa Fluor 488-conjugated AffiniPure Goat Anti-Rabbit IgG(H+L)