

# SNX6 antibody



Catalog Number: 115484

## Product name

SNX6 antibody

## Specificity

Human, Mouse, Rat; other species not tested.

## Antibody description

SNX6 Rabbit Polyclonal antibody. Positive FC detected in RAW 264.7 cells. Positive IHC detected in human heart tissue, human prostate cancer tissue. Positive WB detected in RAW 264.7 cells, HepG2 cells, human placenta tissue, mouse brain tissue. Positive IP detected in HepG2 cells. Observed molecular weight by Western-blot: 47 kDa

## Preparation

This antibody was obtained by immunization of SNX6 recombinant protein (Accession Number: NM\_021249). Purification method: Antigen affinity purified.

## Formulation

PBS with 0.1% sodium azide and 50% glycerol pH 7.3.

## Storage

Store at -20°C. DO NOT ALIQUOT

## Clonality

Polyclonal

## Ig Type

Rabbit IgG

## Applications

ELISA, IHC, WB, FC, IP

## Dilutions

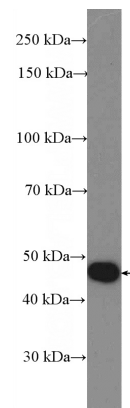
Recommended Dilution:

WB: 1:200-1:2000

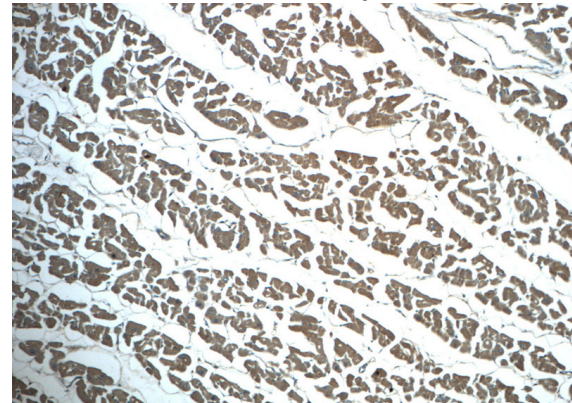
IP: 1:200-1:2000

IHC: 1:20-1:200

## Validations



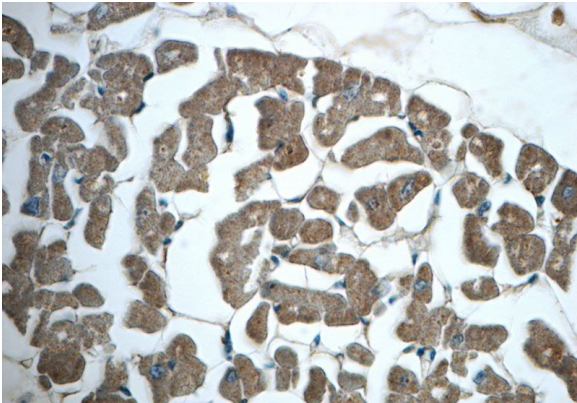
RAW 264.7 cells were subjected to SDS PAGE followed by western blot with Catalog No:115484(SNX6 Antibody) at dilution of 1:600



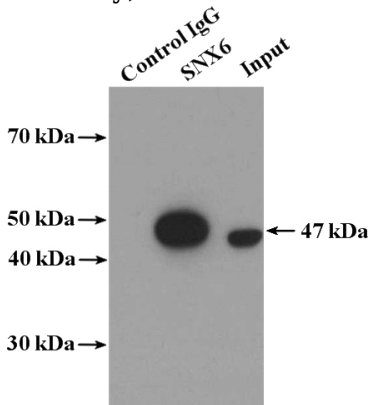
Immunohistochemistry of paraffin-embedded human heart slide using Catalog No:115484(SNX6 Antibody) at dilution of 1:50 (under 10x lens)

# SNX6 antibody

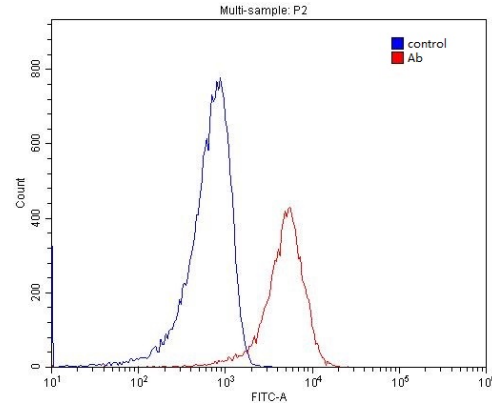
Catalog Number: 115484



Immunohistochemistry of paraffin-embedded human heart slide using Catalog No:115484(SNX6 Antibody) at dilution of 1:50 (under 40x lens)



IP Result of anti-SNX6 (IP:Catalog No:115484, 4ug; Detection:Catalog No:115484 1:600) with HepG2 cells lysate 4000ug.



1X10<sup>6</sup> RAW 264.7 cells were stained with 0.2ug SNX6 antibody (Catalog No:115484, red) and control antibody (blue). Fixed with 4% PFA blocked with 3% BSA (30 min). Alexa Fluor 488-conjugated AffiniPure Goat Anti-Rabbit IgG(H+L) with dilution 1:1500.