

SND1 antibody

Catalog Number: 115452

General Information

Product name:

SND1 antibody

Immunogen:

Applications:

ELISA, WB, IHC, IF

Specificity:

Human, Mouse, Rat; other species not tested.

Antibody description:

SND1 Rabbit Polyclonal antibody. Positive WB detected in HeLa cells, COLO 320 cells, Jurkat cells. Positive IF detected in HeLa cells. Positive IHC detected in human liver tissue. Observed molecular weight by Western-blot: 101 kDa

Properties

Preparation:

This antibody was obtained by immunization of SND1 recombinant protein (Accession Number: BC017180). Purification method: Antigen affinity purified.

Formulation:

PBS with 0.1% sodium azide and 50% glycerol pH 7.3.

Storage:

Store at -20°C. DO NOT ALIQUOT

Clonality:

Polyclonal

Ig Type: Rabbit IgG

Applications

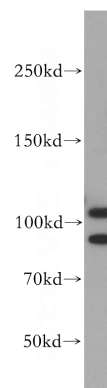
Recommended Dilution:

WB: 1:200-1:1000

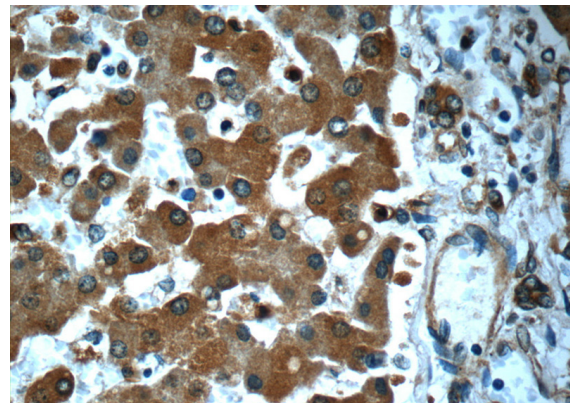
IHC: 1:20-1:200

IF: 1:50-1:500

Validations



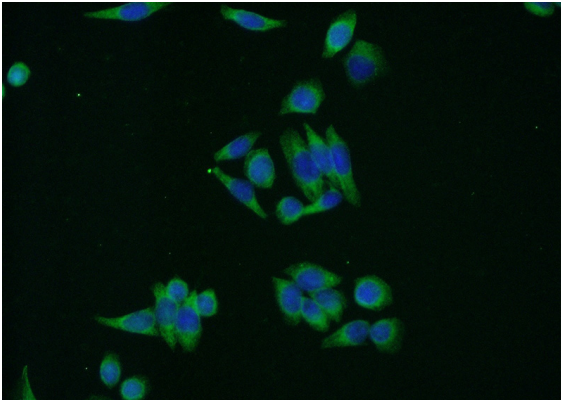
HeLa cells were subjected to SDS PAGE followed by western blot with Catalog No:115452(SND1 antibody) at dilution of 1:300



Immunohistochemistry of paraffin-embedded human liver slide using Catalog No:115452(SND1 Antibody) at dilution of 1:50

SND1 antibody

Catalog Number: 115452



Immunofluorescent analysis of (-20oc Ethanol) fixed HeLa cells using Catalog No:115452(SND1 Antibody) at dilution of 1:50 and Alexa Fluor 488-conjugated AffiniPure Goat Anti-Rabbit IgG(H+L)