

# SMARCB1 antibody

Catalog Number: 115431

## Product name

SMARCB1 antibody

IP: 1:200-1:2000

IHC: 1:20-1:200

## Specificity

Human, Mouse, Rat; other species not tested.

## Antibody description

SMARCB1 Rabbit Polyclonal antibody. Positive WB detected in HepG2 cells, K-562 cells. Positive IP detected in K-562 cells. Positive IHC detected in human lymphoma tissue, human prostate cancer tissue. Observed molecular weight by Western-blot: 40-44 kDa

## Preparation

This antibody was obtained by immunization of Peptide (Accession Number: NM\_003073). Purification method: Antigen affinity purified.

## Formulation

PBS with 0.02% sodium azide and 50% glycerol pH 7.3.

## Storage

Store at -20°C. DO NOT ALIQUOT

## Clonality

Polyclonal

## Ig Type

Rabbit IgG

## Applications

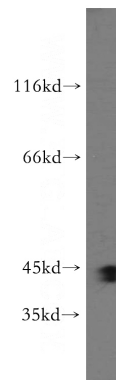
ELISA, WB, IP, IHC

## Dilutions

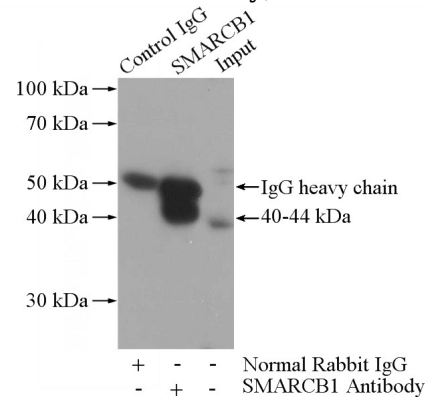
Recommended Dilution:

WB: 1:500-1:5000

## Validations

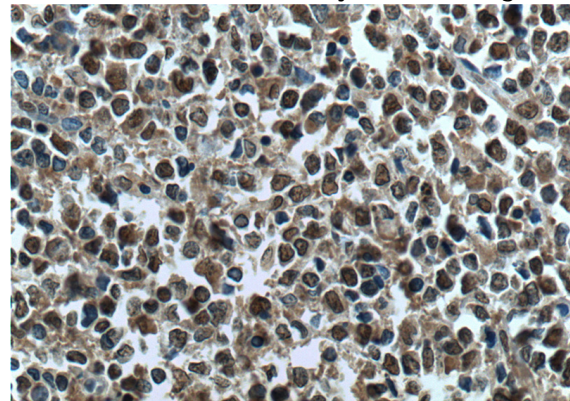


HepG2 cells were subjected to SDS PAGE followed by western blot with Catalog No:115431(SMARCB1 antibody) at dilution of



1:500

IP Result of anti-SMARCB1 (IP:Catalog No:115431, 4ug; Detection:Catalog No:115431 1:500) with K-562 cells lysate 3200ug.



Immunohistochemistry of paraffin-embedded

# SMARCB1 antibody



Catalog Number: 115431

---

human lymphoma tissue slide using Catalog  
No:115431(SMARCB1 Antibody) at dilution of

1:200 (under 40x lens). heat mediated antigen  
retrieved with Tris-EDTA buffer(pH9).