

# SMAD5 antibody



Catalog Number: 115421

## Product name

SMAD5 antibody

Recommended Dilution:

WB: 1:500-1:5000

## Immunogen

[Human SMAD5 Recombinant protein \(GST tag\)](#)

IP: 1:500-1:5000

IF: 1:10-1:100

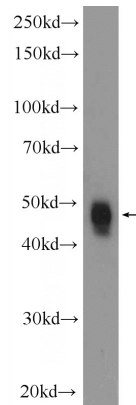
## Specificity

Human, Mouse, Rat; other species not tested.

## Validations

## Antibody description

SMAD5 Rabbit Polyclonal antibody. Positive FC detected in MCF-7 cells. Positive IF detected in MCF-7 cells. Positive WB detected in K-562 cells. Positive IP detected in K-562 cells. Observed molecular weight by Western-blot: 52 kDa



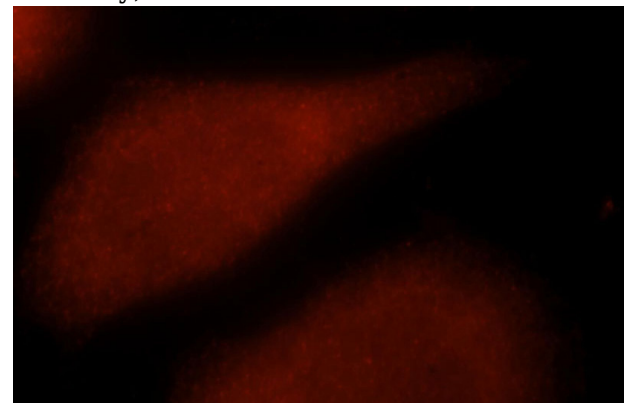
## Preparation

This antibody was obtained by immunization of SMAD5 recombinant protein (Accession Number: XM\_017009470). Purification method: Antigen affinity purified.

K-562 cells were subjected to SDS PAGE followed by western blot with Catalog No:115421(SMAD5 Antibody) at dilution of 1:1000

## Formulation

PBS with 0.1% sodium azide and 50% glycerol pH 7.3.



## Storage

Store at -20°C. DO NOT ALIQUOT

## Clonality

Polyclonal

Immunofluorescent analysis of MCF-7 cells, using SMAD5 antibody Catalog No:115421 at 1:25 dilution and Rhodamine-labeled goat anti-rabbit

## Ig Type

Rabbit IgG

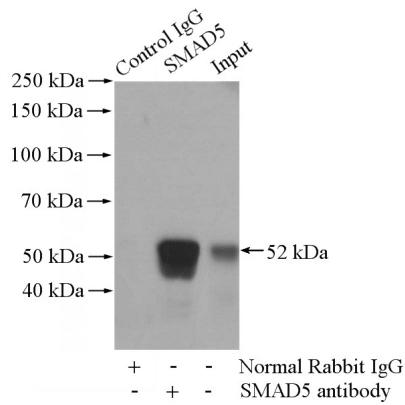
## Applications

ELISA, IF, WB, FC, IP

## Dilutions

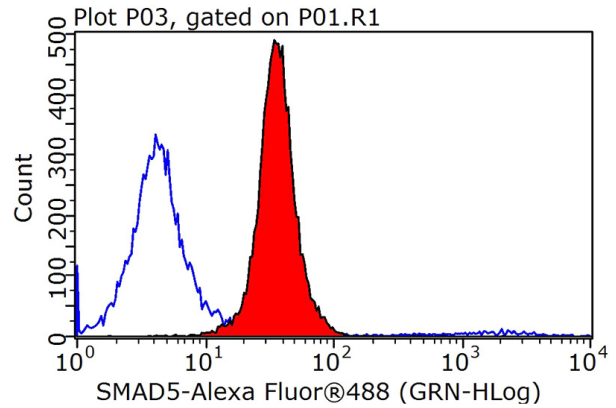
# SMAD5 antibody

Catalog Number: 115421



IgG (red).

IP Result of anti-SMAD5 (IP:Catalog No:115421, 4ug; Detection:Catalog No:115421 1:1000) with K-562 cells lysate 3200ug.



1X10<sup>6</sup> MCF-7 cells were stained with 0.2ug SMAD5 antibody (Catalog No:115421, red) and control antibody (blue). Fixed with 90% MeOH blocked with 3% BSA (30 min). Alexa Fluor 488-conjugated AffiniPure Goat Anti-Rabbit IgG(H+L) with dilution 1:1000.