

SLP76 antibody



Catalog Number: 115411

Product name

SLP76 antibody

Specificity

Human, Mouse, Rat; other species not tested.

Antibody description

SLP76 Rabbit Polyclonal antibody. Positive IP detected in Jurkat cells. Positive WB detected in Jurkat cells, K-562 cells, RAW264.7 cells. Observed molecular weight by Western-blot: 70-76 kDa

Preparation

This antibody was obtained by immunization of SLP76 recombinant protein (Accession Number: NM_005565). Purification method: Antigen affinity purified.

Formulation

PBS with 0.1% sodium azide and 50% glycerol pH 7.3.

Storage

Store at -20°C. DO NOT ALIQUOT

Clonality

Polyclonal

Ig Type

Rabbit IgG

Applications

ELISA, WB, IP

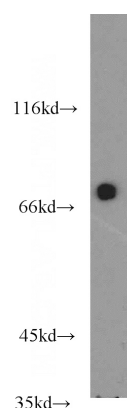
Dilutions

Recommended Dilution:

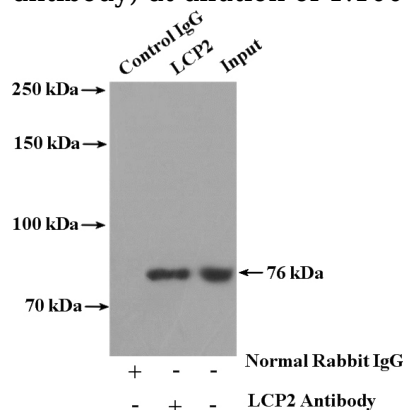
WB: 1:500-1:5000

IP: 1:200-1:2000

Validations



Jurkat cells were subjected to SDS PAGE followed by western blot with Catalog No:115411(LCP2 antibody) at dilution of 1:1000



IP Result of anti-LCP2 (IP:Catalog No:115411, 4ug; Detection:Catalog No:115411 1:500) with Jurkat cells lysate 4000ug.