

# SLN antibody

Catalog Number: 115410

## Product name

SLN antibody

IHC: 1:20-1:200

IF: 1:20-1:200

## Specificity

Human, Mouse, Rat; other species not tested.

## Antibody description

SLN Rabbit Polyclonal antibody. Positive WB detected in human heart tissue, mouse heart tissue. Positive IHC detected in human heart tissue. Positive IF detected in PC-3 cells. Observed molecular weight by Western-blot: 4 kDa

## Preparation

This antibody was obtained by immunization of SLN recombinant protein (Accession Number: NM\_003063). Purification method: Antigen affinity purified.

## Formulation

PBS with 0.02% sodium azide and 50% glycerol pH 7.3.

## Storage

Store at -20°C. DO NOT ALIQUOT

## Clonality

Polyclonal

## Ig Type

Rabbit IgG

## Applications

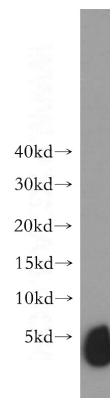
ELISA, WB, IHC, IF

## Dilutions

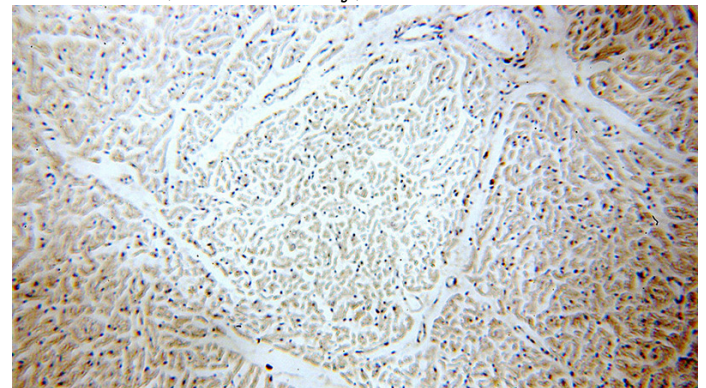
Recommended Dilution:

WB: 1:200-1:2000

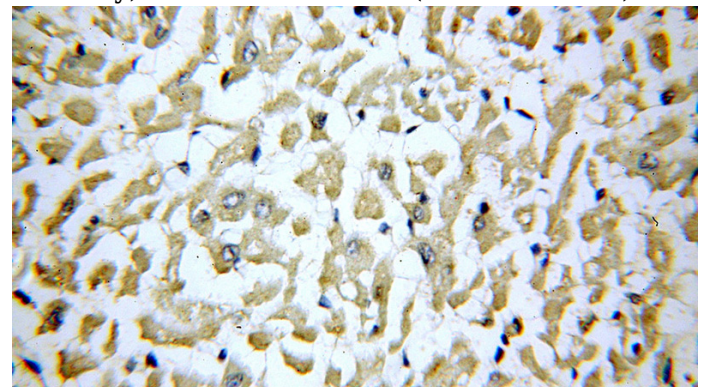
## Validations



human heart tissue were subjected to SDS PAGE followed by western blot with Catalog No:115410(SLN antibody) at dilution of 1:300



Immunohistochemical of paraffin-embedded human heart using Catalog No:115410(SLN antibody) at dilution of 1:100 (under 10x lens)



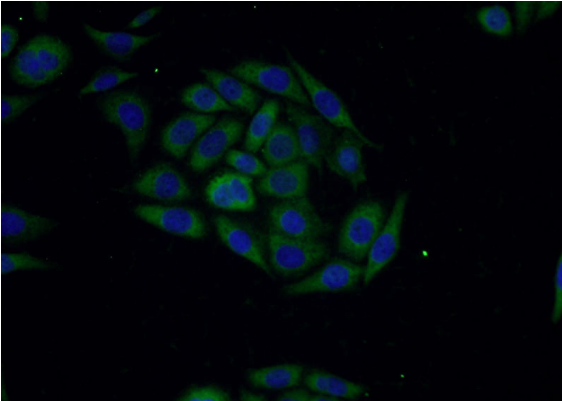
Immunohistochemical of paraffin-embedded human heart using Catalog No:115410(SLN

# SLN antibody

Catalog Number: 115410

---

antibody) at dilution of 1:100 (under 40x lens)



Immunofluorescent analysis of PC-3 cells using Catalog No:115410(SLN Antibody) at dilution of 1:50 and Alexa Fluor 488-conjugated AffiniPure Goat Anti-Rabbit IgG(H+L)