

# SMYD1-Specific antibody



Catalog Number: 115406

## Product name

SMYD1-Specific antibody

## Specificity

Human, Mouse; other species not tested.

## Antibody description

SMYD1-Specific Rabbit Polyclonal antibody. Positive IHC detected in human testis tissue, human heart tissue, human kidney tissue, human liver tissue, human lung tissue, human ovary tissue, human placenta tissue, human skin tissue, human spleen tissue. Positive WB detected in mouse heart tissue, human skeletal muscle tissue, mouse skeletal muscle tissue. Positive IP detected in mouse heart tissue. Observed molecular weight by Western-blot: 56 kDa

## Preparation

This antibody was obtained by immunization of Peptide (Accession Number: NM\_198274). Purification method: Antigen affinity purified.

## Formulation

PBS with 0.02% sodium azide and 50% glycerol pH 7.3.

## Storage

Store at -20°C. DO NOT ALIQUOT

## Clonality

Polyclonal

## Ig Type

Rabbit IgG

## Applications

ELISA, WB, IHC, IP

## Dilutions

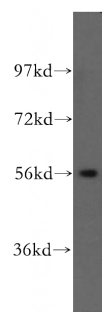
Recommended Dilution:

WB: 1:200-1:2000

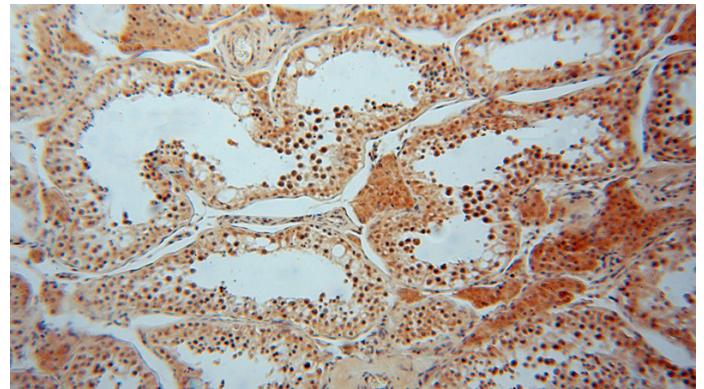
IP: 1:200-1:2000

IHC: 1:20-1:200

## Validations



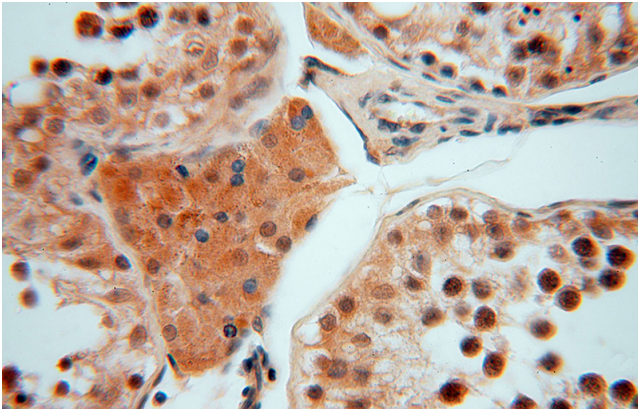
mouse heart tissue were subjected to SDS PAGE followed by western blot with Catalog No:115406(SMYD1-Specific antibody) at dilution of 1:500



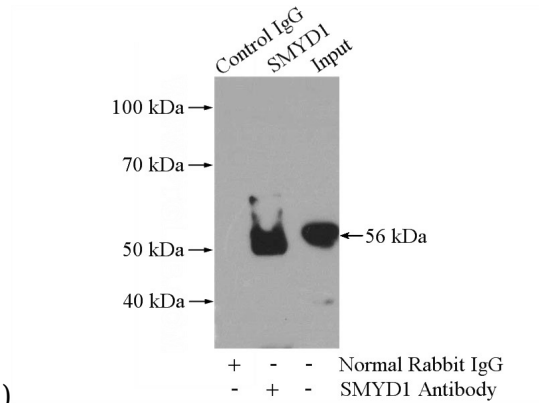
Immunohistochemical of paraffin-embedded human testis using Catalog No:115406(SMYD1-Specific antibody) at dilution of 1:50 (under 10x lens)

# SMYD1-Specific antibody

Catalog Number: 115406



Immunohistochemical of paraffin-embedded human testis using Catalog No:115406(SMYD1-Specific antibody) at dilution of 1:50 (under 40x



lens)

IP Result of anti-SMYD1-Specific (IP:Catalog No:115406, 4ug; Detection:Catalog No:115406 1:500) with mouse heart tissue lysate 4000ug.