

# SMTNL2 antibody

Catalog Number: 115403

## Product name

SMTNL2 antibody

IP: 1:200-1:2000

IF: 1:10-1:100

## Specificity

Human, Mouse, Rat; other species not tested.

## Antibody description

SMTNL2 Rabbit Polyclonal antibody. Positive WB detected in COLO 320 cells, MCF7 cells, mouse small intestine tissue, SGC-7901 cells. Positive IP detected in COLO 320 cells. Positive IF detected in MCF-7 cells. Observed molecular weight by Western-blot: 68-70 kDa

## Preparation

This antibody was obtained by immunization of SMTNL2 recombinant protein (Accession Number: XM\_006721515). Purification method: Antigen affinity purified.

## Formulation

PBS with 0.02% sodium azide and 50% glycerol pH 7.3.

## Storage

Store at -20°C. DO NOT ALIQUOT

## Clonality

Polyclonal

## Ig Type

Rabbit IgG

## Applications

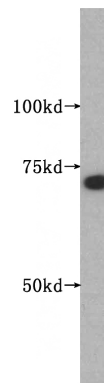
ELISA, WB, IF, IP

## Dilutions

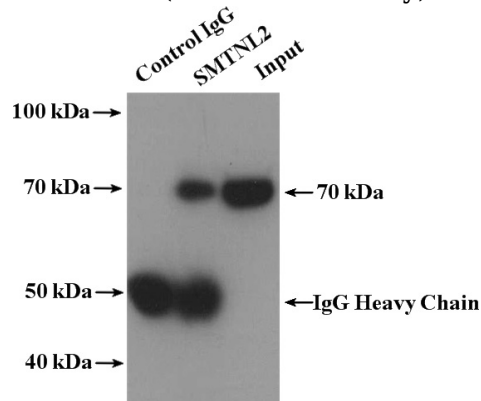
Recommended Dilution:

WB: 1:500-1:5000

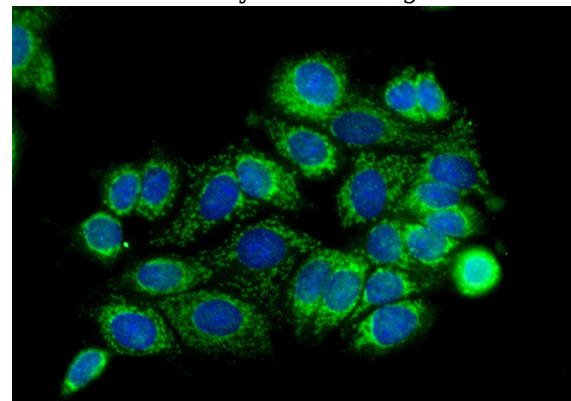
## Validations



COLO 320 cells were subjected to SDS PAGE followed by western blot with Catalog No:115403(SMTNL2 antibody) at dilution of 1:500



IP Result of anti-SMTNL2 (IP:Catalog No:115403, 4ug; Detection:Catalog No:115403 1:500) with COLO 320 cells lysate 4000ug.



Immunofluorescent analysis of (-20oc Ethanol) fixed MCF-7 cells using Catalog

# SMTNL2 antibody



Catalog Number: 115403

---

No:115403(SMTNL2 Antibody) at dilution of 1:25 and Alexa Fluor 488-conjugated AffiniPure Goat Anti-Rabbit IgG(H+L)