

SMPX antibody

Catalog Number: 115401

Product name

SMPX antibody

Specificity

human, mouse, rat; other species not tested.

Antibody description

SMPX Rabbit Polyclonal antibody. Positive WB detected in human skeletal muscle tissue, human colon tissue. Positive IHC detected in human kidney. Observed molecular weight by Western-blot: 9kd

Preparation

This antibody was obtained by immunization of SMPX recombinant protein (Accession Number: NM_014332). Purification method: Antigen affinity purified.

Formulation

PBS with 0.02% sodium azide and 50% glycerol pH 7.3.

Storage

Store at -20°C. DO NOT ALIQUOT

Clonality

Polyclonal

Ig Type

Rabbit IgG

Applications

ELISA, WB, IHC

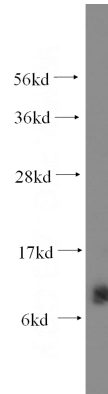
Dilutions

Recommended Dilution:

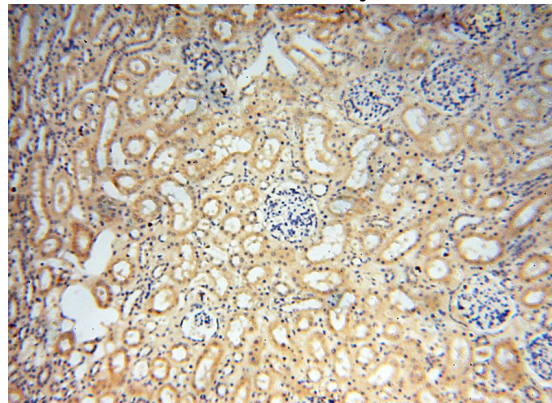
WB: 1:200-1:2000

IHC: 1:20-1:200

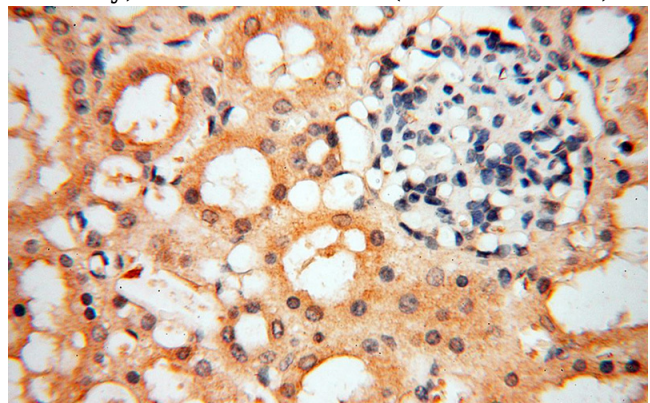
Validations



human skeletal muscle tissue were subjected to SDS PAGE followed by western blot with Catalog No:115401(SMPX antibody) at dilution of 1:400



Immunohistochemical of paraffin-embedded human kidney using Catalog No:115401(SMPX antibody) at dilution of 1:50 (under 10x lens)



Immunohistochemical of paraffin-embedded human kidney using Catalog No:115401(SMPX antibody) at dilution of 1:50 (under 40x lens)