

# smooth muscle actin specific antibody



Catalog Number: 115397

## Product name

smooth muscle actin specific antibody

WB: 1:200-1:2000

IHC: 1:20-1:200

## Specificity

Human, Mouse, Rat; other species not tested.

## Antibody description

smooth muscle actin specific Rabbit Polyclonal antibody. Positive WB detected in mouse colon tissue, mouse stomach tissue. Positive IHC detected in human heart tissue, human colon cancer tissue, human colon tissue, human hepat°Cirrhosis tissue, mouse colon tissue, rat colon tissue. Observed molecular weight by Western-blot: 42 kDa

## Preparation

This antibody was obtained by immunization of Peptide (Accession Number: NM\_001613). Purification method: Antigen affinity purified.

## Formulation

PBS with 0.1% sodium azide and 50% glycerol pH 7.3.

## Storage

Store at -20°C. DO NOT ALIQUOT

## Clonality

Polyclonal

## Ig Type

Rabbit IgG

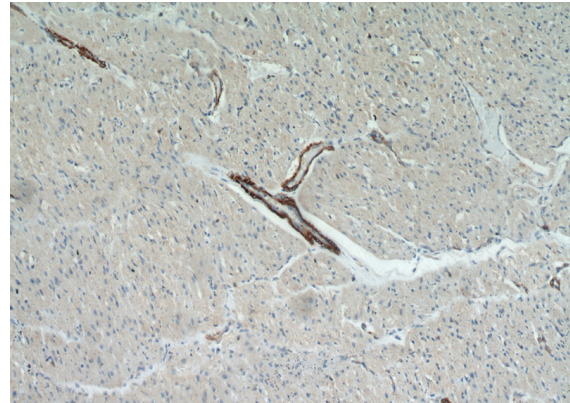
## Applications

ELISA, IHC, WB

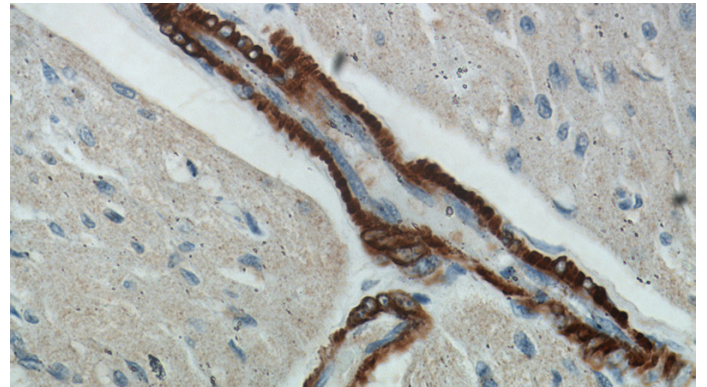
## Dilutions

Recommended Dilution:

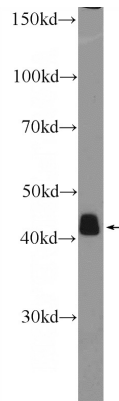
## Validations



Immunohistochemical of paraffin-embedded human heart using Catalog No:115397(ACTA2-Specific antibody) at dilution of 1:100 (under 10x lens)



Immunohistochemical of paraffin-embedded human heart using Catalog No:115397(ACTA2-Specific antibody) at dilution of 1:100 (under 40x



lens)

mouse colon tissue were subjected to SDS PAGE

# smooth muscle actin specific antibody



Catalog Number: 115397

---

followed by western blot with Catalog

No:115397(a-SMA specific Antibody) at dilution of  
1:600