

# SMN antibody

Catalog Number: 115393

## Product name

SMN antibody

## Specificity

Human, Mouse, Rat; other species not tested.

## Antibody description

SMN Rabbit Polyclonal antibody. Positive IHC detected in human kidney tissue, human brain tissue, human heart tissue, human lung tissue, human ovary tissue, human placenta tissue, human skin tissue, human spleen tissue, human testis tissue. Positive IF detected in Hela cells, HepG2 cells. Positive WB detected in HEK-293 cells, A549 cells, HeLa cells, HepG2 cells, Jurkat cells, K-562 cells, mouse testis tissue. Positive IP detected in HEK-293. Observed molecular weight by Western-blot: 38 kDa; 66-70 kDa

## Preparation

This antibody was obtained by immunization of SMN recombinant protein (Accession Number: NM\_022875). Purification method: Antigen affinity purified.

## Formulation

PBS with 0.1% sodium azide and 50% glycerol pH 7.3.

## Storage

Store at -20°C. DO NOT ALIQUOT

## Clonality

Polyclonal

## Ig Type

Rabbit IgG

## Applications

ELISA, IHC, IF, IP, WB

## Dilutions

Recommended Dilution:

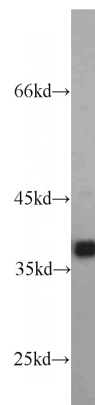
WB: 1:500-1:5000

IP: 1:500-1:5000

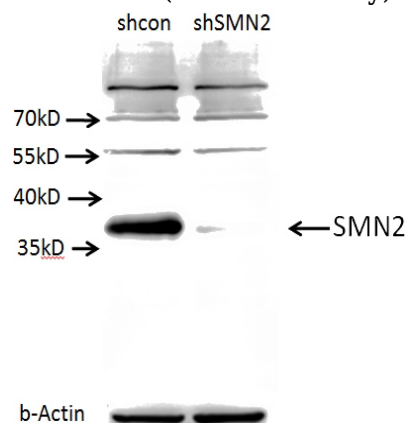
IHC: 1:20-1:200

IF: 1:10-1:100

## Validations



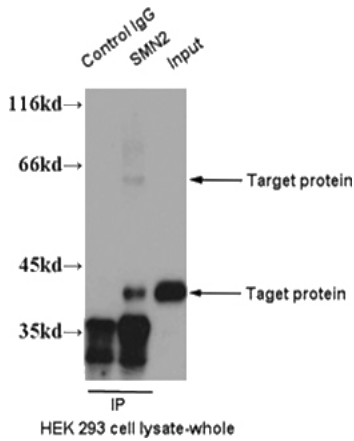
HEK-293 cells were subjected to SDS PAGE followed by western blot with Catalog No:115393(SMN2 antibody) at dilution of 1:1000



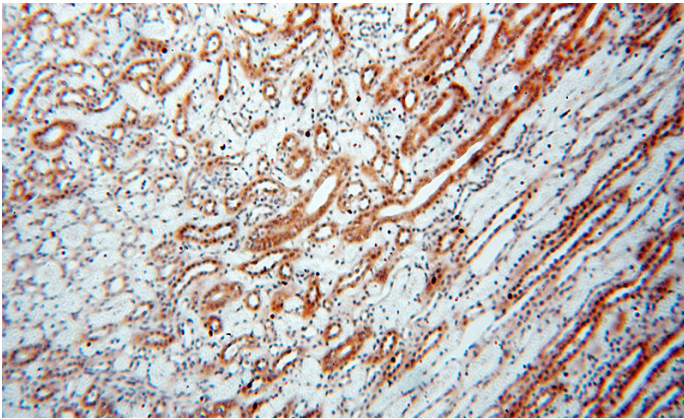
A549 cells (shcontrol and shRNA of SMN) were subjected to SDS PAGE followed by western blot with Catalog No:115393 (SMN2 antibody) at dilution of 1:1000. (Data provided by Angran Biotech ([www.miRNAlab.com](http://www.miRNAlab.com))).

# SMN antibody

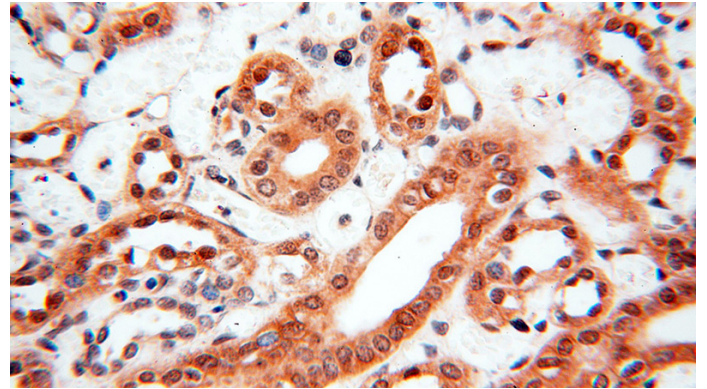
Catalog Number: 115393



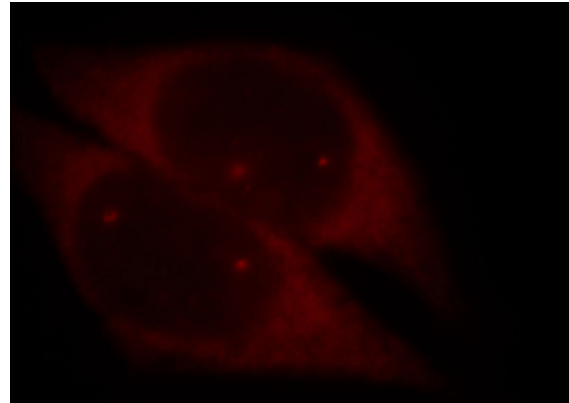
IP result of anti-SMN2(Catalog No:115393 for IP and Detection).



Immunohistochemical of paraffin-embedded human kidney using Catalog No:115393(SMN2 antibody) at dilution of 1:100 (under 10x lens)



Immunohistochemical of paraffin-embedded human kidney using Catalog No:115393(SMN2 antibody) at dilution of 1:100 (under 40x lens)



Immunofluorescent analysis of HeLa cells, using SMN2 antibody Catalog No:115393 at 1:25 dilution and Rhodamine-labeled goat anti-rabbit IgG (red).