

# SMCR7/MID49 antibody



Catalog Number: 115386

## Product name

SMCR7/MID49 antibody

IHC: 1:20-1:200

## Specificity

Human, Mouse; other species not tested.

## Antibody description

SMCR7/MID49 Rabbit Polyclonal antibody.  
Positive WB detected in HT-1080 cells. Positive IHC detected in human liver cancer tissue, human skeletal muscle tissue. Observed molecular weight by Western-blot: 49 kDa

## Preparation

This antibody was obtained by immunization of SMCR7/MID49 recombinant protein (Accession Number: NM\_139162). Purification method: Antigen affinity purified.

## Formulation

PBS with 0.1% sodium azide and 50% glycerol pH 7.3.

## Storage

Store at -20°C. DO NOT ALIQUOT

## Clonality

Polyclonal

## Ig Type

Rabbit IgG

## Applications

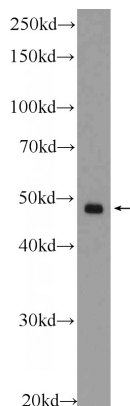
ELISA, IHC, WB

## Dilutions

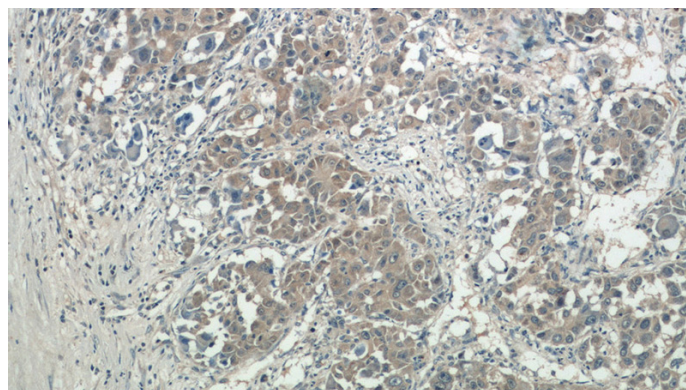
Recommended Dilution:

WB: 1:200-1:1000

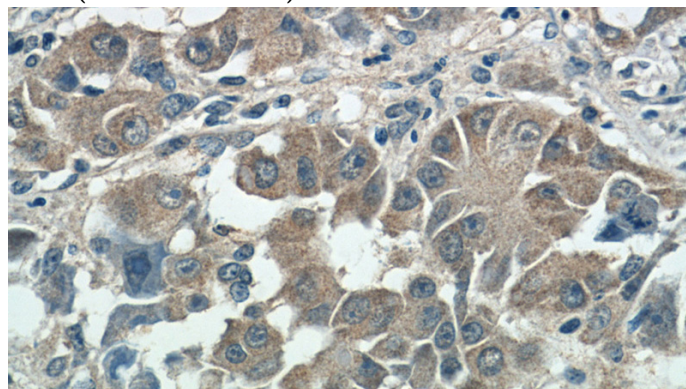
## Validations



HT-1080 cells were subjected to SDS PAGE followed by western blot with Catalog No:115386(SMCR7,MID49 Antibody) at dilution of 1:300



Immunohistochemistry of paraffin-embedded human liver cancer tissue slide using Catalog No:115386(SMCR7,MID49 Antibody) at dilution of 1:50 (under 10x lens)



Immunohistochemistry of paraffin-embedded human liver cancer tissue slide using Catalog

# SMCR7/MID49 antibody



Catalog Number: 115386

---

No:115386(SMCR7,MID49 Antibody) at dilution of 1:50 (under 40x lens)