

# SLC3A1 antibody



Catalog Number: 115376

## Product name

SLC3A1 antibody

IP: 1:500-1:5000

IHC: 1:20-1:200

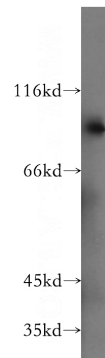
## Specificity

Human, Mouse, Rat; other species not tested.

## Validations

## Antibody description

SLC3A1 Rabbit Polyclonal antibody. Positive IHC detected in human kidney tissue, human small intestine tissue. Positive WB detected in HEK-293 cells, HeLa cells, mouse kidney tissue. Positive IP detected in mouse kidney tissue. Observed molecular weight by Western-blot: 85 kDa



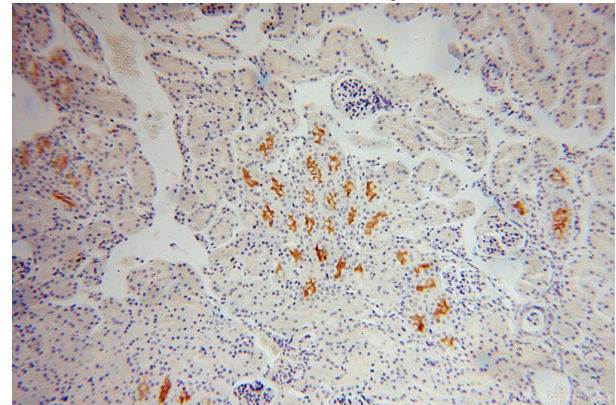
## Preparation

This antibody was obtained by immunization of SLC3A1 recombinant protein (Accession Number: NM\_000341). Purification method: Antigen affinity purified.

HEK-293 cells were subjected to SDS PAGE followed by western blot with Catalog No:115376(SLC3A1 antibody) at dilution of 1:800

## Formulation

PBS with 0.02% sodium azide and 50% glycerol pH 7.3.



## Storage

Store at -20°C. DO NOT ALIQUOT

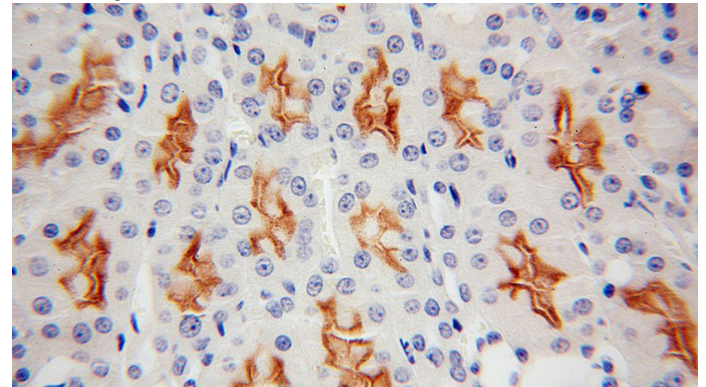
## Clonality

Polyclonal

Immunohistochemical of paraffin-embedded human kidney using Catalog No:115376(SLC3A1 antibody) at dilution of 1:100 (under 10x lens)

## Ig Type

Rabbit IgG



## Applications

ELISA, WB, IHC, IP

## Dilutions

Recommended Dilution:

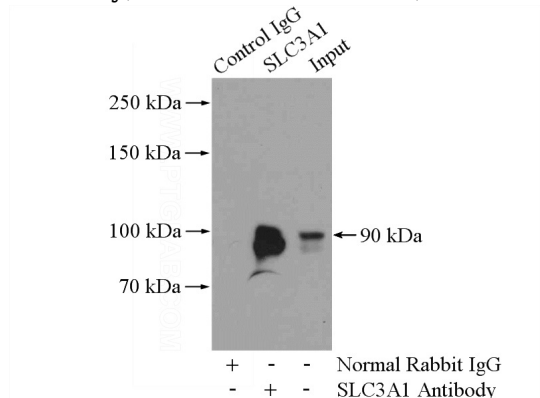
WB: 1:200-1:2000

Immunohistochemical of paraffin-embedded human kidney using Catalog No:115376(SLC3A1

# SLC3A1 antibody

Catalog Number: 115376

antibody) at dilution of 1:100 (under 40x lens)



IP Result of anti-SLC3A1 (IP:Catalog No:115376, 4ug; Detection:Catalog No:115376 1:1000) with mouse kidney tissue lysate 4000ug.