

# SLC25A10 antibody

Catalog Number: 115321

## Product name

SLC25A10 antibody

## Immunogen

[Human SLC25A10 Recombinant protein \(His tag\)](#)

## Specificity

Human, Mouse, Rat; other species not tested.

## Antibody description

SLC25A10 Rabbit Polyclonal antibody. Positive IP detected in mouse liver tissue. Positive WB detected in mouse liver tissue, mouse kidney tissue. Observed molecular weight by Western-blot: 31 kDa

## Preparation

This antibody was obtained by immunization of SLC25A10 recombinant protein (Accession Number: NM\_001270888). Purification method: Antigen affinity purified.

## Formulation

PBS with 0.02% sodium azide and 50% glycerol pH 7.3.

## Storage

Store at -20°C. DO NOT ALIQUOT

## Clonality

Polyclonal

## Ig Type

Rabbit IgG

## Applications

ELISA, WB, IP

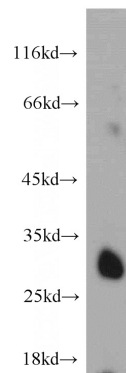
## Dilutions

Recommended Dilution:

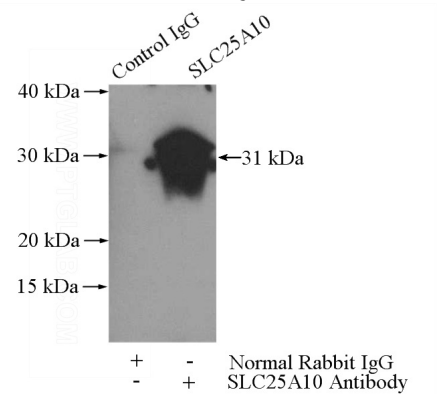
WB: 1:200-1:2000

IP: 1:200-1:2000

## Validations



mouse liver tissue were subjected to SDS PAGE followed by western blot with Catalog No:115321(SLC25A10 antibody) at dilution of



1:500

IP Result of anti-SLC25A10 (IP:Catalog No:115321, 3ug; Detection:Catalog No:115321 1:500) with mouse liver tissue lysate 4000ug.