

SLC11A2 antibody



Catalog Number: 115298

Product name

SLC11A2 antibody

Specificity

Human, Mouse, Rat; other species not tested.

Antibody description

SLC11A2 Rabbit Polyclonal antibody. Positive WB detected in COLO 320 cells, HEK-293 cells, human brain tissue, human testis tissue, mouse thymus tissue, SH-SY5Y cells. Observed molecular weight by Western-blot: 60-70, 75-100 kDa

Preparation

This antibody was obtained by immunization of SLC11A2 recombinant protein (Accession Number: NM_001174128). Purification method: Antigen affinity purified.

Formulation

PBS with 0.02% sodium azide and 50% glycerol pH 7.3.

Storage

Store at -20°C. DO NOT ALIQUOT

Clonality

Polyclonal

Ig Type

Rabbit IgG

Applications

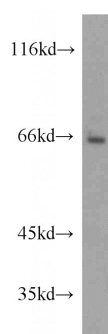
ELISA, WB

Dilutions

Recommended Dilution:

WB: 1:200-1:2000

Validations



COLO 320 cells were subjected to SDS PAGE followed by western blot with Catalog No:115298(SLC11A2 antibody) at dilution of 1:300