

# SKP2 antibody

Catalog Number: 115290

## Product name

SKP2 antibody

IP: 1:200-1:1000

IHC: 1:20-1:200

## Specificity

Human, Mouse, Rat; other species not tested.

IF: 1:10-1:100

## Antibody description

SKP2 Rabbit Polyclonal antibody. Positive WB detected in HEK-293 cells, Jurkat cells. Positive IP detected in HEK-293 cells. Positive IF detected in HepG2 cells. Positive IHC detected in human breast cancer tissue. Observed molecular weight by Western-blot: 48kd

## Preparation

This antibody was obtained by immunization of SKP2 recombinant protein (Accession Number: NM\_032637). Purification method: Antigen affinity purified.

## Formulation

PBS with 0.02% sodium azide and 50% glycerol pH 7.3.

## Storage

Store at -20°C. DO NOT ALIQUOT

## Clonality

Polyclonal

## Ig Type

Rabbit IgG

## Applications

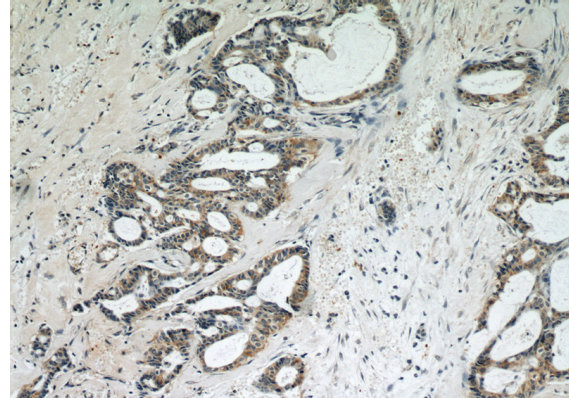
ELISA, IHC, WB, IP, IF

## Dilutions

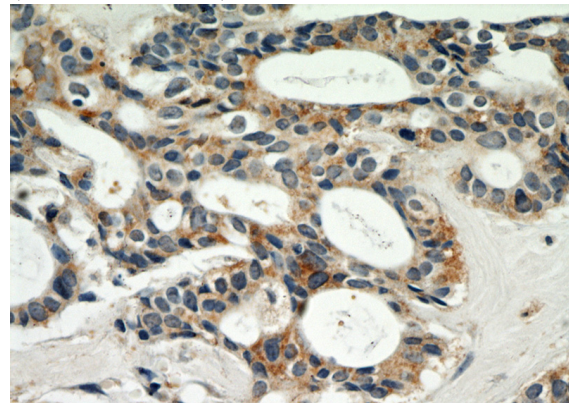
Recommended Dilution:

WB: 1:200-1:2000

## Validations



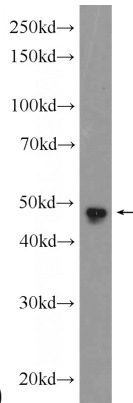
Immunohistochemical of paraffin-embedded human breast cancer using Catalog No:115290(SKP2 antibody) at dilution of 1:50 (under 10x lens)



Immunohistochemical of paraffin-embedded human breast cancer using Catalog No:115290(SKP2 antibody) at dilution of 1:50

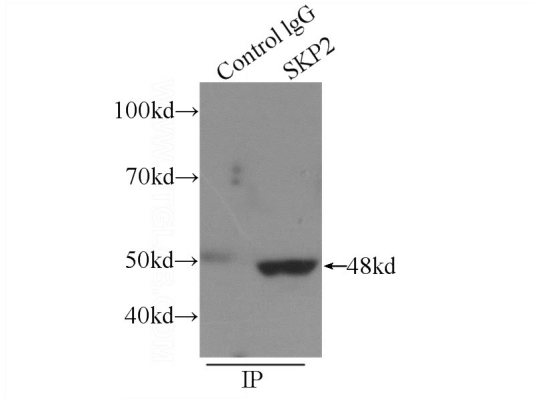
# SKP2 antibody

Catalog Number: 115290

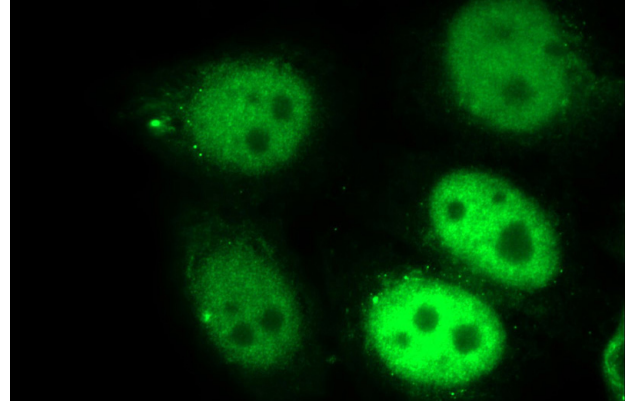


(under 40x lens)

HEK-293 cells were subjected to SDS PAGE followed by western blot with Catalog No:115290(SK P2 Antibody) at dilution of 1:600



IP Result of anti-SKP2 (IP:Catalog No:115290, 4ug; Detection:Catalog No:115290 1:300) with HEK-293 cells lysate 2440ug.



Immunofluorescent analysis of HepG2 cells using Catalog No:115290(SK P2 Antibody) at dilution of 1:25 and Alexa Fluor 488-conjugated AffiniPure Goat Anti-Rabbit IgG(H+L)