

# SERPINB6 antibody



Catalog Number: 115204

## Product name

SERPINB6 antibody

IP: 1:200-1:2000

IHC: 1:20-1:200

## Specificity

Human, Mouse; other species not tested.

## Antibody description

SERPINB6 Rabbit Polyclonal antibody. Positive IHC detected in human skeletal muscle tissue. Positive WB detected in mouse skeletal muscle tissue, human placenta tissue. Positive IP detected in human placenta tissue. Observed molecular weight by Western-blot: 42 kDa

## Preparation

This antibody was obtained by immunization of SERPINB6 recombinant protein (Accession Number: NM\_001271824). Purification method: Antigen affinity purified.

## Formulation

PBS with 0.02% sodium azide and 50% glycerol pH 7.3.

## Storage

Store at -20°C. DO NOT ALIQUOT

## Clonality

Polyclonal

## Ig Type

Rabbit IgG

## Applications

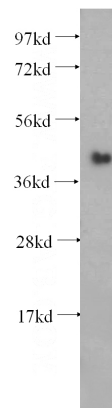
ELISA, WB, IHC, IP

## Dilutions

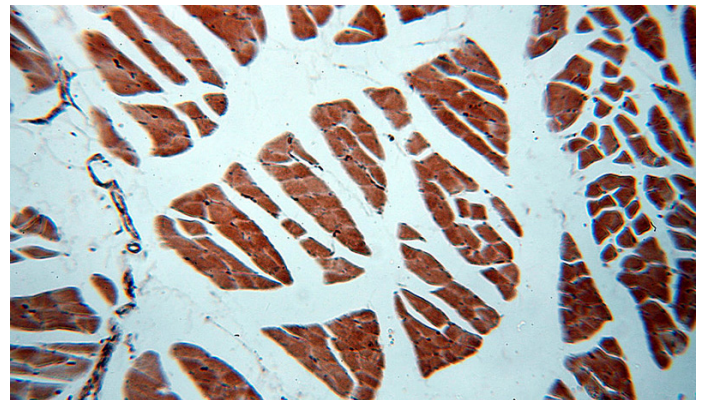
Recommended Dilution:

WB: 1:200-1:2000

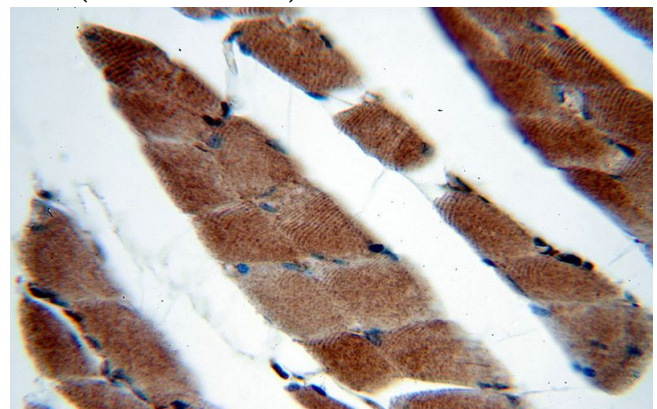
## Validations



mouse skeletal muscle tissue were subjected to SDS PAGE followed by western blot with Catalog No:115204(SERPINB6 antibody) at dilution of 1:500



Immunohistochemical of paraffin-embedded human skeletal muscle using Catalog No:115204(SERPINB6 antibody) at dilution of 1:50 (under 10x lens)

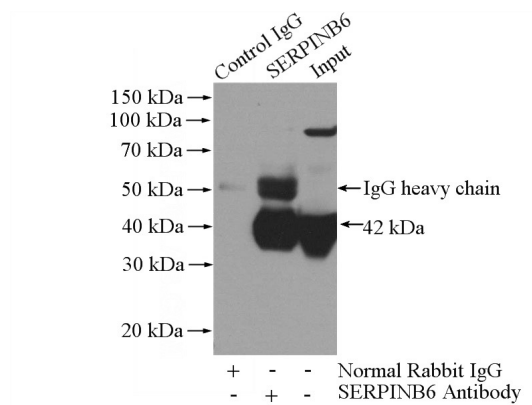


# SERPINB6 antibody

Catalog Number: 115204

---

Immunohistochemical of paraffin-embedded human skeletal muscle using Catalog No:115204(SERPINB6 antibody) at dilution of 1:50 (under 40x lens)



IP Result of anti-SERPINB6 (IP:Catalog No:115204, 4ug; Detection:Catalog No:115204 1:500) with human placenta tissue lysate 1520ug.