

# SERPINA6 antibody

Catalog Number: 115199

## Product name

SERPINA6 antibody

WB: 1:200-1:2000

IHC: 1:20-1:200

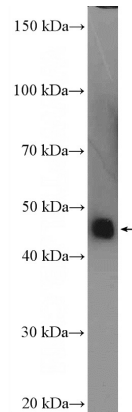
## Specificity

Human; other species not tested.

## Validations

## Antibody description

SERPINA6 Rabbit Polyclonal antibody. Positive WB detected in human plasma tissue, A375 cells, HEK-293 cells, L02 cells. Positive IHC detected in human kidney tissue, human hepat°Cirrhosis tissue, human liver cancer tissue, human liver tissue. Observed molecular weight by Western-blot: 45 kDa



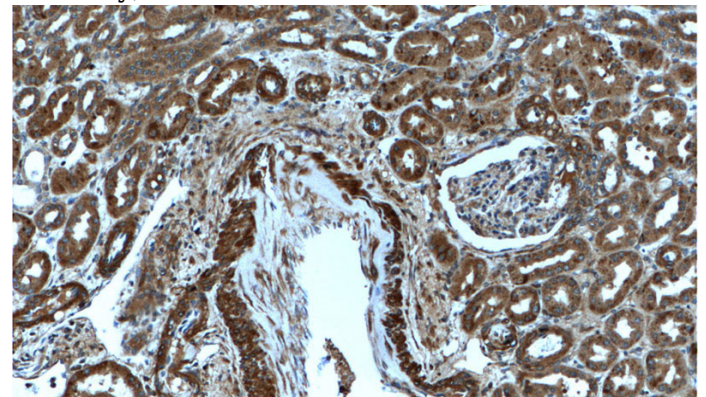
## Preparation

This antibody was obtained by immunization of SERPINA6 recombinant protein (Accession Number: NM\_001756). Purification method: Antigen affinity purified.

human plasma tissue were subjected to SDS PAGE followed by western blot with Catalog No:115199(Corticosteroid binding globulin Antibody) at dilution of 1:600

## Formulation

PBS with 0.1% sodium azide and 50% glycerol pH 7.3.



## Storage

Store at -20°C. DO NOT ALIQUOT

## Clonality

Polyclonal

Immunohistochemistry of paraffin-embedded human kidney tissue slide using Catalog No:115199(Corticosteroid binding globulin Antibody) at dilution of 1:200 (under 10x lens).

## Ig Type

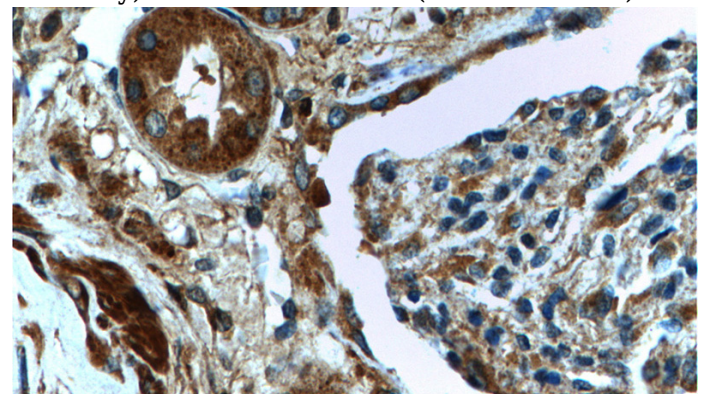
Rabbit IgG

## Applications

ELISA, WB, IHC

## Dilutions

Recommended Dilution:



# SERPINA6 antibody



Catalog Number: 115199

---

Immunohistochemistry of paraffin-embedded human kidney tissue slide using Catalog

No:115199(Corticosteroid binding globulin Antibody) at dilution of 1:200 (under 40x lens).