

# SH2D3C antibody

Catalog Number: 115182

## Product name

SH2D3C antibody

IP: 1:200-1:2000

IHC: 1:20-1:200

## Specificity

Human,Mouse,Rat; other species not tested.

## Antibody description

SH2D3C Rabbit Polyclonal antibody. Positive WB detected in HEK-293 cells, human brain tissue, human placenta tissue. Positive IP detected in mouse brain tissue,. Positive IHC detected in human breast cancer tissue. Observed molecular weight by Western-blot: 77 kDa

## Preparation

This antibody was obtained by immunization of SH2D3C recombinant protein (Accession Number: NM\_005489). Purification method: Antigen affinity purified.

## Formulation

PBS with 0.1% sodium azide and 50% glycerol pH 7.3.

## Storage

Store at -20°C. DO NOT ALIQUOT

## Clonality

Polyclonal

## Ig Type

Rabbit IgG

## Applications

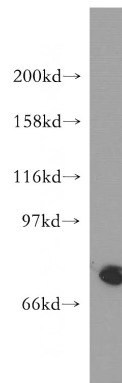
ELISA, WB, IHC, IP

## Dilutions

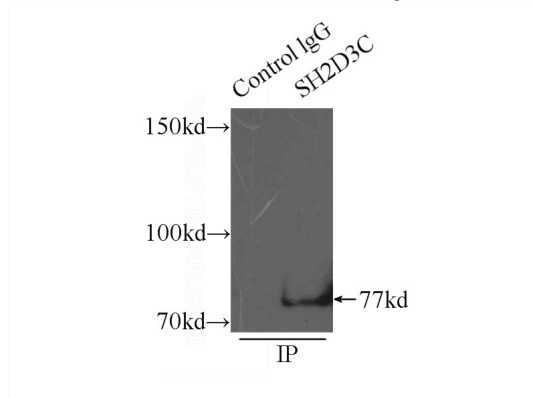
Recommended Dilution:

WB: 1:500-1:5000

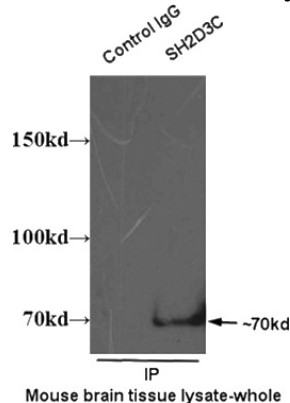
## Validations



HEK-293 cells were subjected to SDS PAGE followed by western blot with Catalog No:115182(SH2D3C antibody) at dilution of 1:300



IP Result of anti-SH2D3C (IP:Catalog No:115182, 3ug; Detection:Catalog No:115182 1:500) with mouse brain tissue lysate 6000ug.



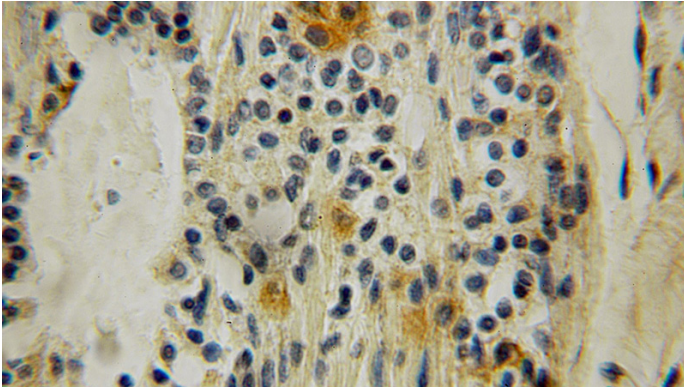
IP result of SH2D3C antibody (Catalog No:115182 for IP and Detection) with mouse brain tissue

# SH2D3C antibody

Catalog Number: 115182

---

lysate.



Immunohistochemical of paraffin-embedded human breast cancer using Catalog No:115182(SH2D3C antibody) at dilution of 1:100 (under 10x lens)