

# SH2D2A antibody



Catalog Number: 115180

## Product name

SH2D2A antibody

## Specificity

Human, Mouse, Rat; other species not tested.

## Antibody description

SH2D2A Rabbit Polyclonal antibody. Positive WB detected in K-562 cells. Positive FC detected in K-562 cells. Positive IHC detected in human heart tissue. Observed molecular weight by Western-blot: 48-52 kDa

## Preparation

This antibody was obtained by immunization of SH2D2A recombinant protein (Accession Number: NM\_001161444). Purification method: Antigen affinity purified.

## Formulation

PBS with 0.02% sodium azide and 50% glycerol pH 7.3.

## Storage

Store at -20°C. DO NOT ALIQUOT

## Clonality

Polyclonal

## Ig Type

Rabbit IgG

## Applications

ELISA, WB, IHC, FC

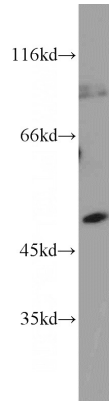
## Dilutions

Recommended Dilution:

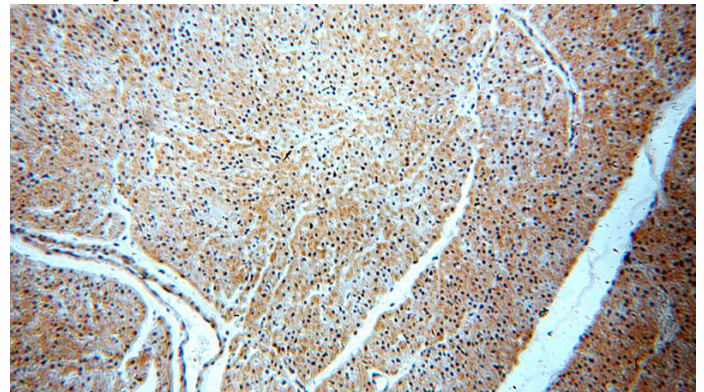
WB: 1:200-1:2000

IHC: 1:20-1:200

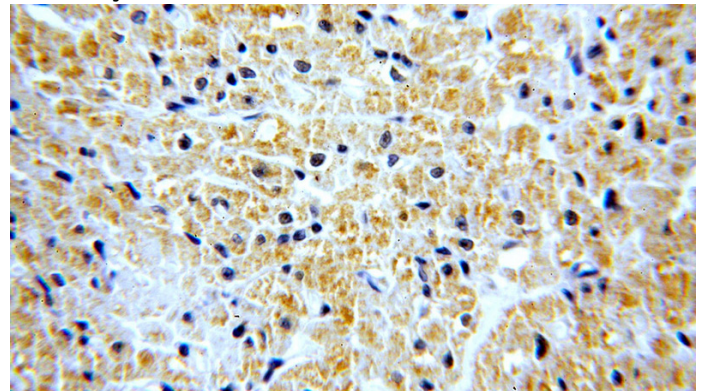
## Validations



K-562 cells were subjected to SDS PAGE followed by western blot with Catalog No:115180(SH2D2A antibody) at dilution of 1:800



Immunohistochemical of paraffin-embedded human heart using Catalog No:115180(SH2D2A antibody) at dilution of 1:50 (under 10x lens)

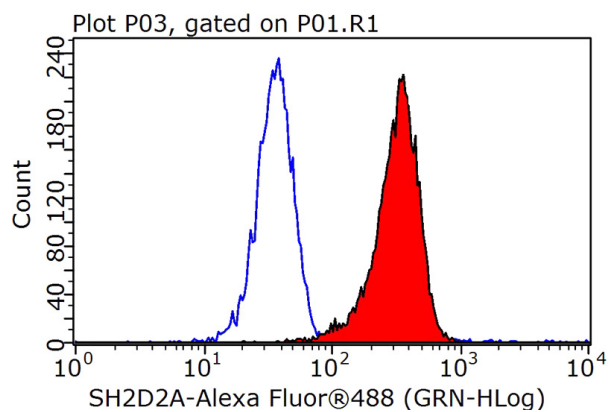


Immunohistochemical of paraffin-embedded human heart using Catalog No:115180(SH2D2A antibody) at dilution of 1:50 (under 40x lens)

# SH2D2A antibody



Catalog Number: 115180



1X10<sup>6</sup> K-562 cells were stained with 0.2ug SH2D2A antibody (Catalog No:115180, red) and control antibody (blue). Fixed with 90% MeOH blocked with 3% BSA (30 min). Alexa Fluor 488-conjugated AffiniPure Goat Anti-Rabbit IgG(H+L) with dilution 1:1000.