

# SGMS1 antibody



Catalog Number: 115171

## Product name

SGMS1 antibody

IP: 1:200-1:1000

IHC: 1:20-1:200

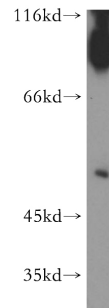
## Specificity

Human, Mouse, Rat; other species not tested.

## Validations

## Antibody description

SGMS1 Rabbit Polyclonal antibody. Positive IHC detected in human liver tissue. Positive WB detected in human heart tissue. Positive IP detected in mouse heart tissue. Observed molecular weight by Western-blot: 50 kDa



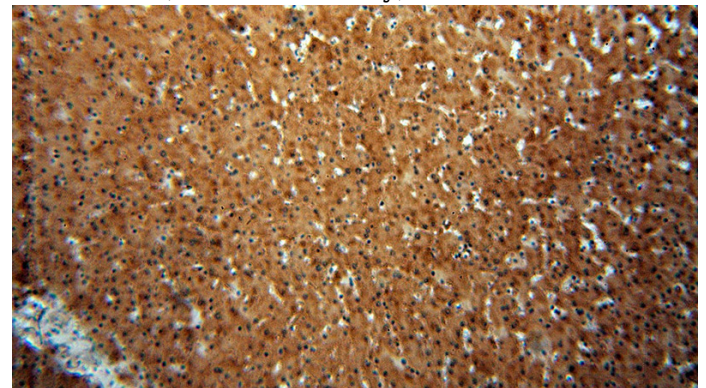
## Preparation

This antibody was obtained by immunization of SGMS1 recombinant protein (Accession Number: XM\_047424974). Purification method: Antigen affinity purified.

human heart tissue were subjected to SDS PAGE followed by western blot with Catalog No:115171(SGMS1 antibody) at dilution of 1:300

## Formulation

PBS with 0.02% sodium azide and 50% glycerol pH 7.3.



## Storage

Store at -20°C. DO NOT ALIQUOT

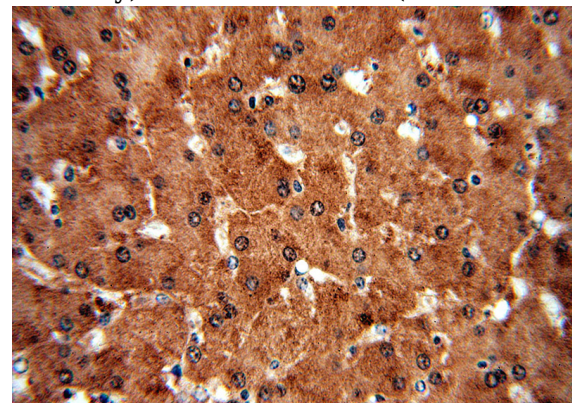
## Clonality

Polyclonal

Immunohistochemical of paraffin-embedded human liver using Catalog No:115171(SGMS1 antibody) at dilution of 1:50 (under 10x lens)

## Ig Type

Rabbit IgG



## Applications

ELISA, WB, IHC, IP

## Dilutions

Recommended Dilution:

WB: 1:200-1:2000

Immunohistochemical of paraffin-embedded human liver using Catalog No:115171(SGMS1

# SGMS1 antibody

Catalog Number: 115171

---

antibody) at dilution of 1:50 (under 40x lens)

IP Result of anti-SGMS1 (IP:Catalog No:115171, 4ug; Detection:Catalog No:115171 1:300) with mouse heart tissue lysate 4000ug.

