

## Product name

SGCG antibody

## Specificity

Human, Mouse, Rat; other species not tested.

## Antibody description

SGCG Rabbit Polyclonal antibody. Positive IP detected in mouse heart tissue. Positive WB detected in human skeletal muscle tissue, human heart tissue, mouse heart tissue. Positive IHC detected in human heart tissue, human kidney tissue, human lung tissue, human ovary tissue, human placenta tissue, human skin tissue. Observed molecular weight by Western-blot: 35-38 kDa

## Preparation

This antibody was obtained by immunization of SGCG recombinant protein (Accession Number: NM\_001378246). Purification method: Antigen affinity purified.

## Formulation

PBS with 0.02% sodium azide and 50% glycerol pH 7.3.

## Storage

Store at -20°C. DO NOT ALIQUOT

## Clonality

Polyclonal

## Ig Type

Rabbit IgG

## Applications

ELISA, WB, IHC, IP

## Dilutions

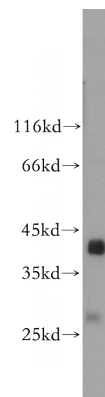
Recommended Dilution:

WB: 1:200-1:2000

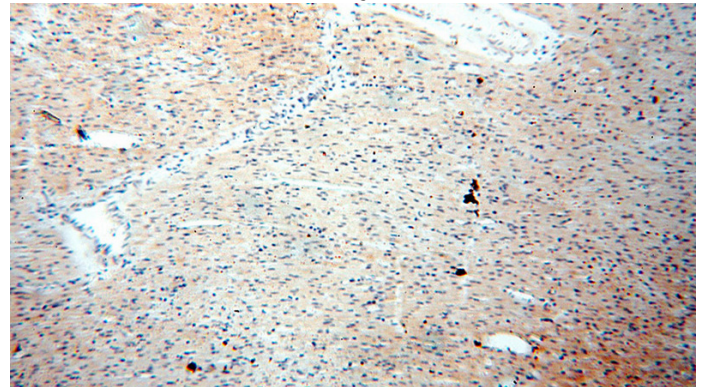
IP: 1:500-1:5000

IHC: 1:20-1:200

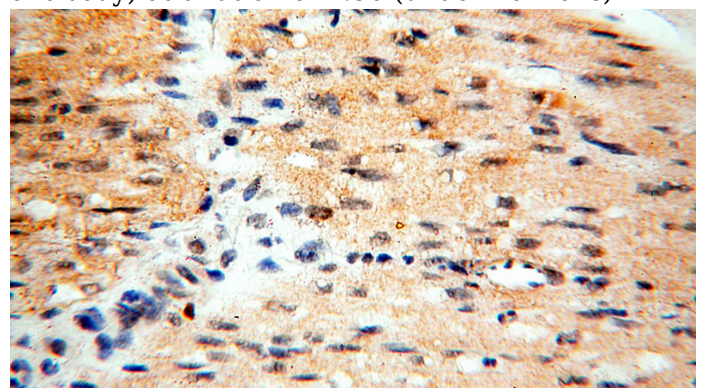
## Validations



human skeletal muscle tissue were subjected to SDS PAGE followed by western blot with Catalog No:115163(SGCG antibody) at dilution of 1:600



Immunohistochemical of paraffin-embedded human heart using Catalog No:115163(SGCG antibody) at dilution of 1:50 (under 10x lens)



# SGCG antibody

Catalog Number: 115163

Immunohistochemical of paraffin-embedded human heart using Catalog No:115163(SGCG antibody) at dilution of 1:50 (under 40x lens)

IP Result of anti-SGCG (IP:Catalog No:115163, 4ug; Detection:Catalog No:115163 1:1000) with mouse heart tissue lysate 4000ug.

