

SFXN3 antibody

Catalog Number: 115161

Product name

SFXN3 antibody

IHC: 1:20-1:200

IF: 1:10-1:100

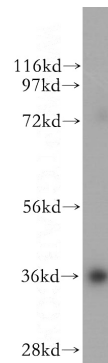
Specificity

Human, Mouse, Rat; other species not tested.

Antibody description

SFXN3 Rabbit Polyclonal antibody. Positive IHC detected in human pancreas cancer tissue. Positive IF detected in BxPC-3 cells. Positive WB detected in human brain tissue, BxPC-3 cells, NIH/3T3 cells. Observed molecular weight by Western-blot: 36kd

Validations



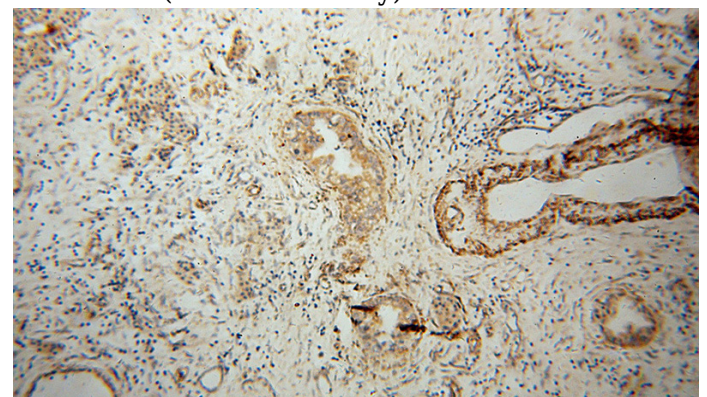
Preparation

This antibody was obtained by immunization of SFXN3 recombinant protein (Accession Number: NM_001388029). Purification method: Antigen affinity purified.

human brain tissue were subjected to SDS PAGE followed by western blot with Catalog No:115161(SFXN3 antibody) at dilution of 1:500

Formulation

PBS with 0.02% sodium azide and 50% glycerol pH 7.3.



Storage

Store at -20°C. DO NOT ALIQUOT

Clonality

Polyclonal

Immunohistochemical of paraffin-embedded human pancreas cancer using Catalog No:115161(SFXN3 antibody) at dilution of 1:100 (under 10x lens)

Ig Type

Rabbit IgG

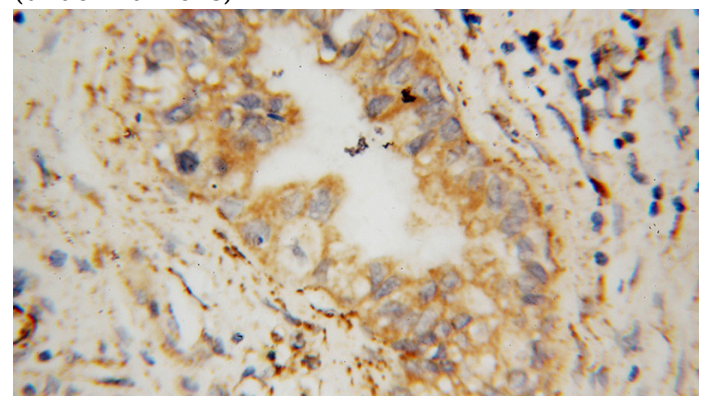
Applications

ELISA, WB, IHC, IF

Dilutions

Recommended Dilution:

WB: 1:500-1:5000

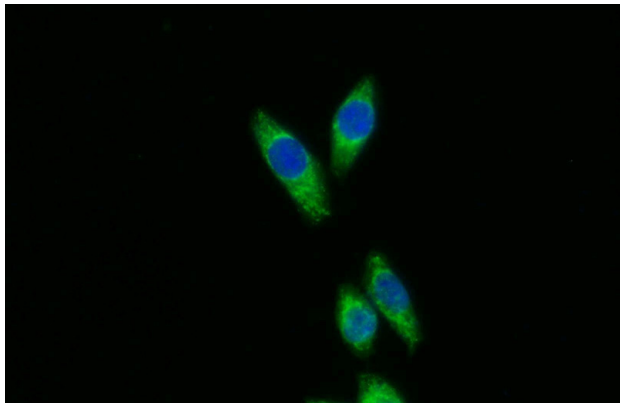


Immunohistochemical of paraffin-embedded

SFXN3 antibody

Catalog Number: 115161

human pancreas cancer using Catalog No:115161(SFXN3 antibody) at dilution of 1:100 (under 40x lens)



Immunofluorescent analysis of BxPC-3 cells using Catalog No:115161(SFXN3 Antibody) at dilution of 1:25 and Alexa Fluor 488-conjugated AffiniPure Goat Anti-Rabbit IgG(H+L)