

SFT2D3 antibody

Catalog Number: 115155

Product name

SFT2D3 antibody

Specificity

Human; other species not tested.

Antibody description

SFT2D3 Rabbit Polyclonal antibody. Positive WB detected in HeLa cells, HepG2 cells, human liver tissue. Positive IHC detected in human pancreas tissue. Observed molecular weight by Western-blot: 20-22kd

Preparation

This antibody was obtained by immunization of Peptide (Accession Number: NM_032740). Purification method: Antigen affinity purified.

Formulation

PBS with 0.02% sodium azide and 50% glycerol pH 7.3.

Storage

Store at -20°C. DO NOT ALIQUOT

Clonality

Polyclonal

Ig Type

Rabbit IgG

Applications

ELISA, WB, IHC

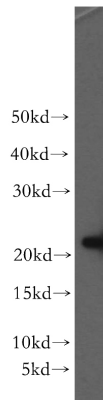
Dilutions

Recommended Dilution:

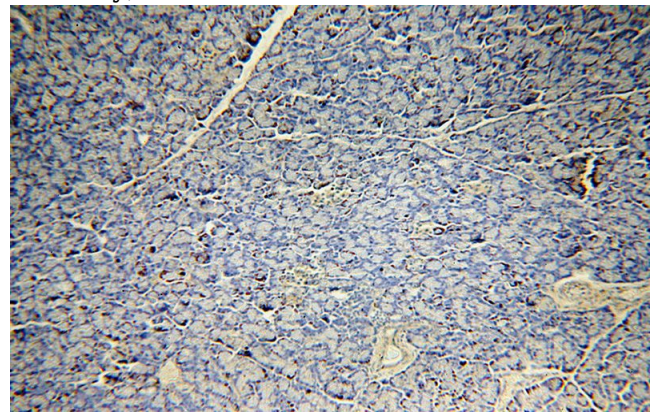
WB: 1:200-1:2000

IHC: 1:20-1:200

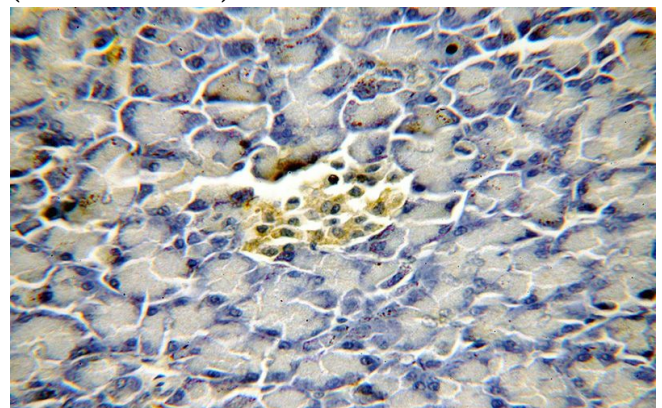
Validations



HeLa cells were subjected to SDS PAGE followed by western blot with Catalog No:115155(SFT2D3 antibody) at dilution of 1:300



Immunohistochemical of paraffin-embedded human pancreas using Catalog No:115155(SFT2D3 antibody) at dilution of 1:50 (under 10x lens)



Immunohistochemical of paraffin-embedded human pancreas using Catalog No:115155(SFT2D3 antibody) at dilution of 1:50 (under 40x lens)