

# SFI1 antibody

Catalog Number: 115142

## Product name

SFI1 antibody

## Specificity

Human, Mouse; other species not tested.

## Antibody description

SFI1 Rabbit Polyclonal antibody. Positive IF detected in HepG2 cells, Hela cells. Positive WB detected in A549 cells, HepG2 cells, mouse lung tissue. Observed molecular weight by Western-blot: 148kd

## Preparation

This antibody was obtained by immunization of SFI1 recombinant protein (Accession Number: BC033613). Purification method: Antigen affinity purified.

## Formulation

PBS with 0.02% sodium azide and 50% glycerol pH 7.3.

## Storage

Store at -20°C. DO NOT ALIQUOT

## Clonality

Polyclonal

## Ig Type

Rabbit IgG

## Applications

ELISA, WB, IF

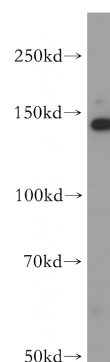
## Dilutions

Recommended Dilution:

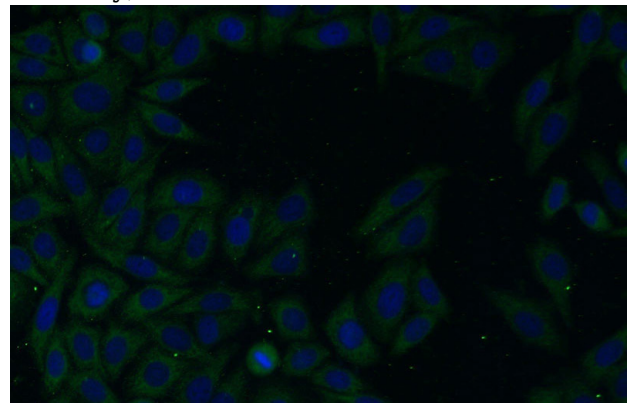
WB: 1:500-1:5000

IF: 1:10-1:100

## Validations



A549 cells were subjected to SDS PAGE followed by western blot with Catalog No:115142(SFI1 antibody) at dilution of 1:400



Immunofluorescent analysis of HepG2 cells using Catalog No:115142(SFI1 Antibody) at dilution of 1:25 and Alexa Fluor 488-conjugated AffiniPure Goat Anti-Rabbit IgG(H+L)