

# SETD8 antibody

Catalog Number: 115129

---

## Product name

SETD8 antibody

## Specificity

Human, Mouse; other species not tested.

## Antibody description

SETD8 Rabbit Polyclonal antibody. Positive WB detected in RAW 264.7 cells. Observed molecular weight by Western-blot: 40 kDa

## Preparation

This antibody was obtained by immunization of SETD8 recombinant protein (Accession Number: NM\_020382). Purification method: Antigen affinity purified.

## Formulation

PBS with 0.1% sodium azide and 50% glycerol pH 7.3.

## Storage

Store at -20°C. DO NOT ALIQUOT

## Clonality

Polyclonal

## Ig Type

Rabbit IgG

## Applications

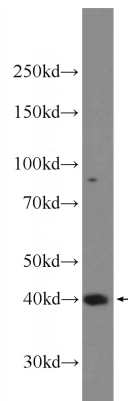
ELISA, WB

## Dilutions

Recommended Dilution:

WB: 1:200-1:2000

## Validations



RAW 264.7 cells were subjected to SDS PAGE followed by western blot with Catalog No:115129(SETD8 Antibody) at dilution of 1:600