

SEPHS1 antibody



Catalog Number: 115111

Product name

SEPHS1 antibody

Specificity

human, mouse, rat; other species not tested.

Antibody description

SEPHS1 Rabbit Polyclonal antibody. Positive IHC detected in human lung cancer. Positive WB detected in HepG2 cells, mouse liver tissue. Observed molecular weight by Western-blot: 43kd

Preparation

This antibody was obtained by immunization of SEPHS1 recombinant protein (Accession Number: XM_017015943). Purification method: Antigen affinity purified.

Formulation

PBS with 0.02% sodium azide and 50% glycerol pH 7.3.

Storage

Store at -20°C. DO NOT ALIQUOT

Clonality

Polyclonal

Ig Type

Rabbit IgG

Applications

ELISA, WB, IHC

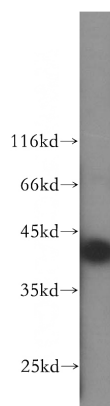
Dilutions

Recommended Dilution:

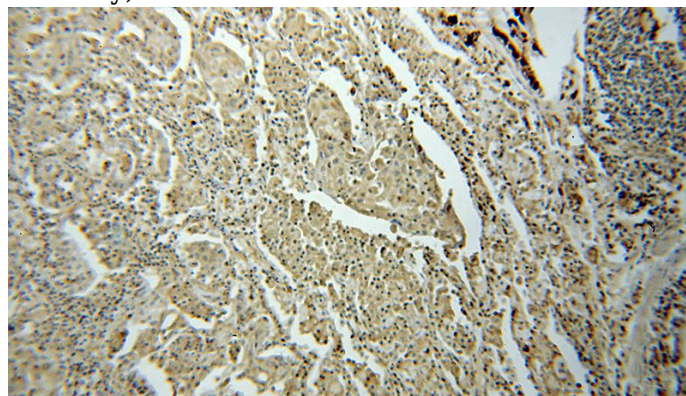
WB: 1:500-1:5000

IHC: 1:20-1:200

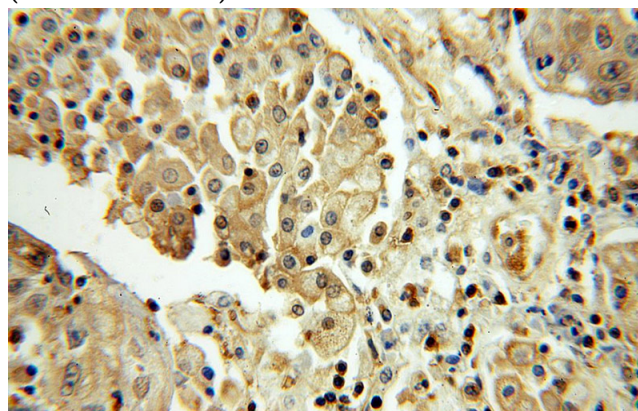
Validations



HepG2 cells were subjected to SDS PAGE followed by western blot with Catalog No:115111(SEPHS1 antibody) at dilution of 1:500



Immunohistochemical of paraffin-embedded human lung cancer using Catalog No:115111(SEPHS1 antibody) at dilution of 1:100 (under 10x lens)



Immunohistochemical of paraffin-embedded human lung cancer using Catalog No:115111(SEPHS1 antibody) at dilution of 1:100 (under 40x lens)