

SENP1 antibody

Catalog Number: 115108

Product name

SENP1 antibody

Specificity

Human; other species not tested.

Antibody description

SENP1 Rabbit Polyclonal antibody. Positive IHC detected in human ovary tissue, human liver tissue, human testis tissue. Positive WB detected in HepG2 cells, HeLa cells, HL-60 cells, Jurkat cells. Observed molecular weight by Western-blot: 73 kDa

Preparation

This antibody was obtained by immunization of SENP1 recombinant protein (Accession Number: NM_001267594). Purification method: Antigen affinity purified.

Formulation

PBS with 0.1% sodium azide and 50% glycerol pH 7.3.

Storage

Store at -20°C. DO NOT ALIQUOT

Clonality

Polyclonal

Ig Type

Rabbit IgG

Applications

ELISA, IHC, WB

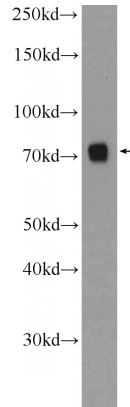
Dilutions

Recommended Dilution:

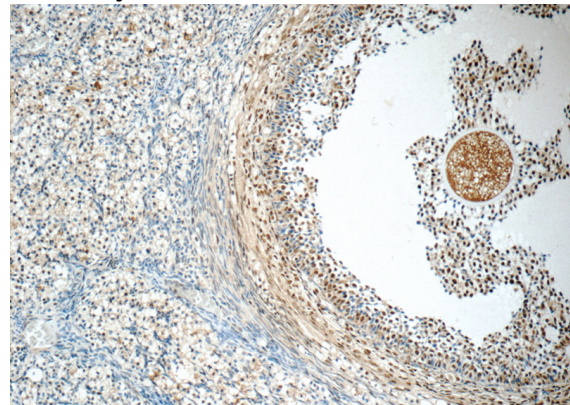
WB: 1:500-1:5000

IHC: 1:20-1:200

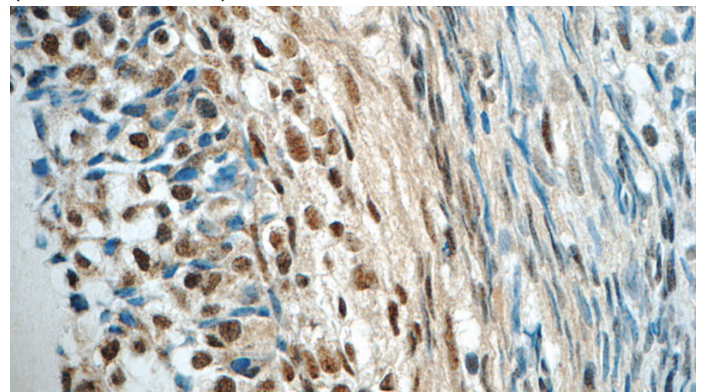
Validations



HepG2 cells were subjected to SDS PAGE followed by western blot with Catalog No:115108(SENP1 Antibody) at dilution of 1:1000



Immunohistochemistry of paraffin-embedded human ovary tissue slide using Catalog No:115108(SENP1 Antibody) at dilution of 1:50 (under 10x lens)



Immunohistochemistry of paraffin-embedded human ovary tissue slide using Catalog No:115108(SENP1 Antibody) at dilution of 1:50

SENP1 antibody



Catalog Number: 115108

(under 40x lens)