

SDSL antibody



Catalog Number: 115073

Product name

SDSL antibody

WB: 1:500-1:5000

IHC: 1:20-1:200

Specificity

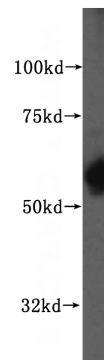
Human, Mouse; other species not tested.

IF: 1:20-1:200

Antibody description

SDSL Rabbit Polyclonal antibody. Positive IHC detected in human liver tissue. Positive IF detected in HepG2 cells. Positive WB detected in HepG2 cells, human colon tissue, human liver tissue, mouse liver tissue, mouse lung tissue. Observed molecular weight by Western-blot: 55 kDa

Validations



Preparation

This antibody was obtained by immunization of SDSL recombinant protein (Accession Number: NM_138432). Purification method: Antigen affinity purified.

HepG2 cells were subjected to SDS PAGE followed by western blot with Catalog No:115073(SDSL antibody) at dilution of 1:700

Formulation

PBS with 0.02% sodium azide and 50% glycerol pH 7.3.

Storage

Store at -20°C. DO NOT ALIQUOT

Clonality

Polyclonal

Ig Type

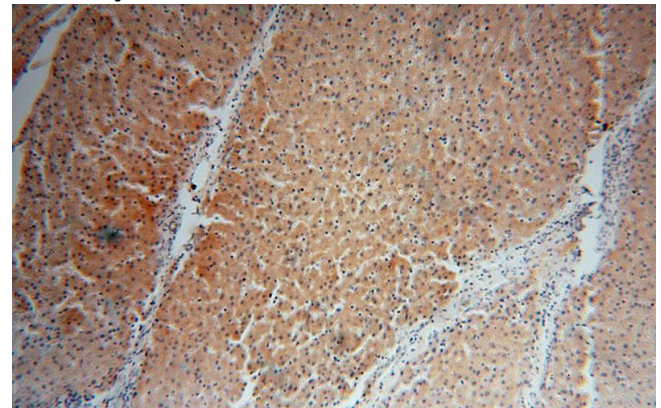
Rabbit IgG

Applications

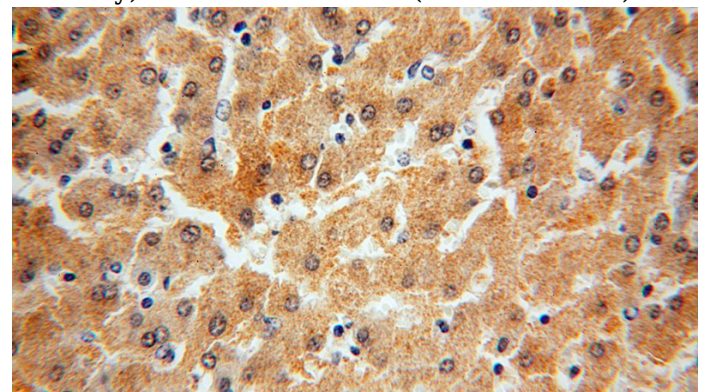
ELISA, WB, IHC, IF

Dilutions

Recommended Dilution:



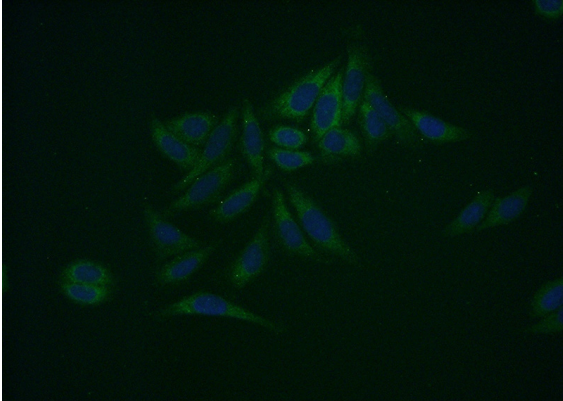
Immunohistochemical of paraffin-embedded human liver using Catalog No:115073(SDSL antibody) at dilution of 1:100 (under 10x lens)



SDSL antibody

Catalog Number: 115073

Immunohistochemical of paraffin-embedded human liver using Catalog No:115073(SDSL antibody) at dilution of 1:100 (under 40x lens)



Immunofluorescent analysis of (-20oc Ethanol) fixed HepG2 cells using Catalog No:115073(SDSL Antibody) at dilution of 1:50 and Alexa Fluor 488-conjugated AffiniPure Goat Anti-Rabbit IgG(H+L)