

SAR1B antibody

Catalog Number: 115067

Product name

SAR1B antibody

WB: 1:500-1:5000

IHC: 1:20-1:200

Specificity

Human, Mouse, Rat; other species not tested.

Antibody description

SAR1B Rabbit Polyclonal antibody. Positive WB detected in mouse liver tissue, mouse brain tissue, mouse skeletal muscle tissue, mouse small intestine tissue, RAW264.7 cells. Positive IHC detected in human liver tissue, human skeletal muscle tissue, human small intestine tissue. Observed molecular weight by Western-blot: 25-27kd

Preparation

This antibody was obtained by immunization of Peptide (Accession Number: NM_016103). Purification method: Antigen affinity purified.

Formulation

PBS with 0.02% sodium azide and 50% glycerol pH 7.3.

Storage

Store at -20°C. DO NOT ALIQUOT

Clonality

Polyclonal

Ig Type

Rabbit IgG

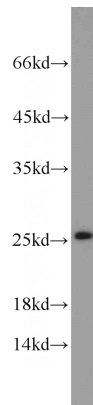
Applications

ELISA, WB, IHC

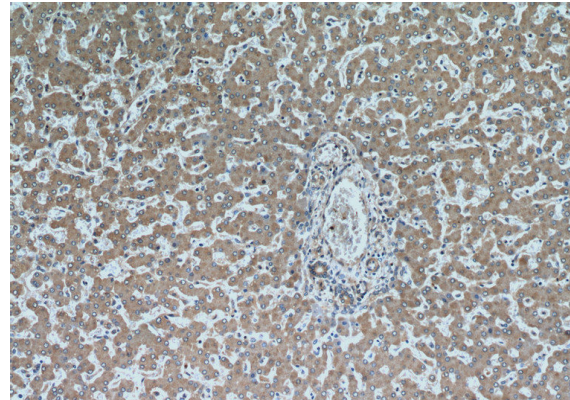
Dilutions

Recommended Dilution:

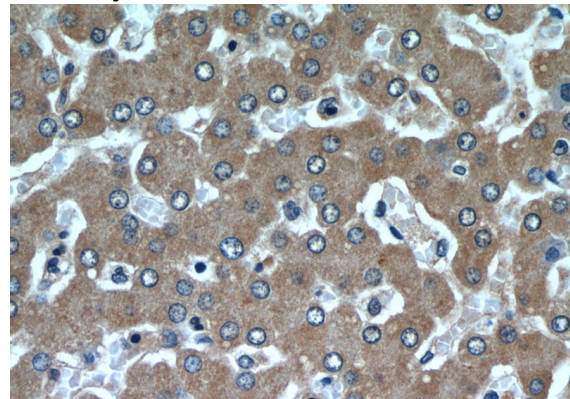
Validations



mouse liver tissue were subjected to SDS PAGE followed by western blot with Catalog No:115067(SAR1B antibody) at dilution of 1:1000



Immunohistochemical of paraffin-embedded human liver using Catalog No:115067(SAR1B antibody) at dilution of 1:50 (under 10x lens)



Immunohistochemical of paraffin-embedded human liver using Catalog No:115067(SAR1B

SAR1B antibody



Catalog Number: 115067

antibody) at dilution of 1:50 (under 40x lens)