

# SAP130 antibody

Catalog Number: 115059

## Product name

SAP130 antibody

IP: 1:200-1:2000

IHC: 1:20-1:200

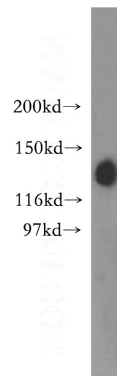
## Specificity

Human, Mouse, Rat; other species not tested.

## Antibody description

SAP130 Rabbit Polyclonal antibody. Positive IHC detected in human pancreas cancer tissue. Positive IP detected in HepG2 cells. Positive WB detected in HEK-293 cells, HeLa cells, HepG2 cells, Jurkat cells, K-562 cells. Observed molecular weight by Western-blot: 130 kDa

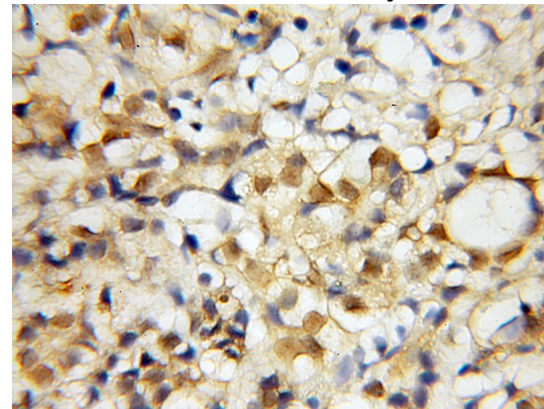
## Validations



## Preparation

This antibody was obtained by immunization of SAP130 recombinant protein (Accession Number: BC017453). Purification method: Antigen affinity purified.

HEK-293 cells were subjected to SDS PAGE followed by western blot with Catalog No:115059(SAP130 antibody) at dilution of 1:400



## Formulation

PBS with 0.02% sodium azide and 50% glycerol pH 7.3.

## Storage

Store at -20°C. DO NOT ALIQUOT

## Clonality

Polyclonal

Immunohistochemical of paraffin-embedded human pancreas cancer using Catalog No:115059(SAP130 antibody) at dilution of 1:50

## Ig Type

Rabbit IgG

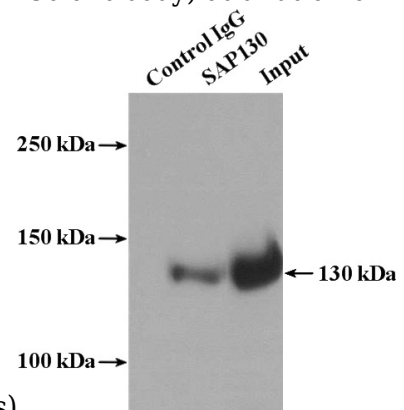
## Applications

ELISA, WB, IHC, IP

## Dilutions

Recommended Dilution:

WB: 1:500-1:5000



(under 10x lens)

IP Result of anti-SAP130 (IP:Catalog No:115059,

# SAP130 antibody



Catalog Number: 115059

---

4ug; Detection:Catalog No:115059 1:600) with HepG2 cells lysate 1000ug.