

SDCCAG10 antibody



Catalog Number: 115026

Product name

SDCCAG10 antibody

IP: 1:200-1:2000

IF: 1:20-1:200

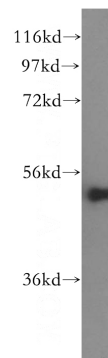
Specificity

Human, Mouse, Rat; other species not tested.

Validations

Antibody description

SDCCAG10 Rabbit Polyclonal antibody. Positive WB detected in HepG2 cells, HeLa cells, human colon tissue. Positive IP detected in HepG2 cells. Positive IF detected in HepG2 cells. Observed molecular weight by Western-blot: 54 kDa



Preparation

This antibody was obtained by immunization of SDCCAG10 recombinant protein (Accession Number: BC012117). Purification method: Antigen affinity purified.

HepG2 cells were subjected to SDS PAGE followed by western blot with Catalog No:115026(SDCCAG10 antibody) at dilution of

Formulation

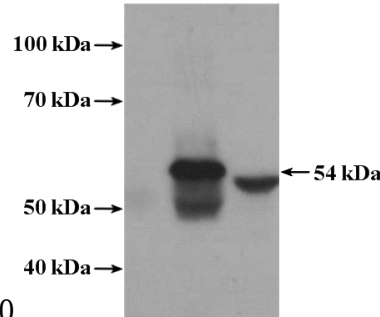
PBS with 0.02% sodium azide and 50% glycerol pH 7.3.

1:500

Storage

Store at -20°C. DO NOT ALIQUOT

Control IgG
SDCCAG10
Input



1:500

Clonality

Polyclonal

IP Result of anti-SDCCAG10 (IP:Catalog No:115026, 4ug; Detection:Catalog No:115026 1:500) with HepG2 cells lysate 2400ug.

Ig Type

Rabbit IgG

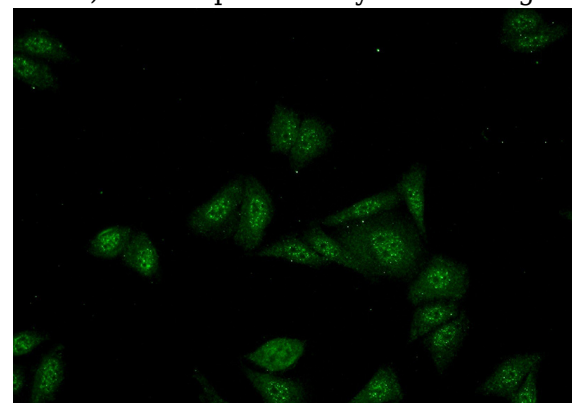
Applications

ELISA, WB, IF, IP

Dilutions

Recommended Dilution:

WB: 1:500-1:5000



Immunofluorescent analysis of (-20oc Ethanol)

SDCCAG10 antibody



Catalog Number: 115026

fixed HepG2 cells using Catalog
No:115026(SDCCAG10 Antibody) at dilution of

1:50 and Alexa Fluor 488-conjugated AffiniPure
Goat Anti-Rabbit IgG(H+L)