

SCP2 antibody

Catalog Number: 115016

Product name

SCP2 antibody

IP: 1:200-1:2000

IF: 1:20-1:200

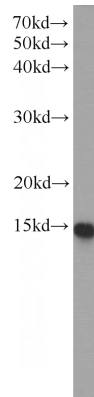
Specificity

Human, Mouse; other species not tested.

Validations

Antibody description

SCP2 Rabbit Polyclonal antibody. Positive IP detected in HepG2 cells. Positive WB detected in HepG2 cells, K-562 cells, NIH/3T3 cells. Positive IF detected in HepG2 cells. Observed molecular weight by Western-blot: 15 kDa



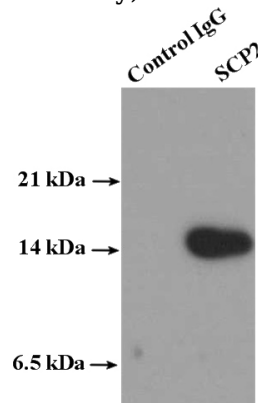
Preparation

This antibody was obtained by immunization of SCP2 recombinant protein (Accession Number: XM_017002046). Purification method: Antigen affinity purified.

HepG2 cells were subjected to SDS PAGE followed by western blot with Catalog No:115016(SCP2 antibody) at dilution of 1:500

Formulation

PBS with 0.02% sodium azide and 50% glycerol pH 7.3.



Storage

Store at -20°C. DO NOT ALIQUOT

Clonality

Polyclonal

IP Result of anti-SCP2 (IP:Catalog No:115016, 4ug; Detection:Catalog No:115016 1:500) with HepG2 cells lysate 3600ug.

Ig Type

Rabbit IgG

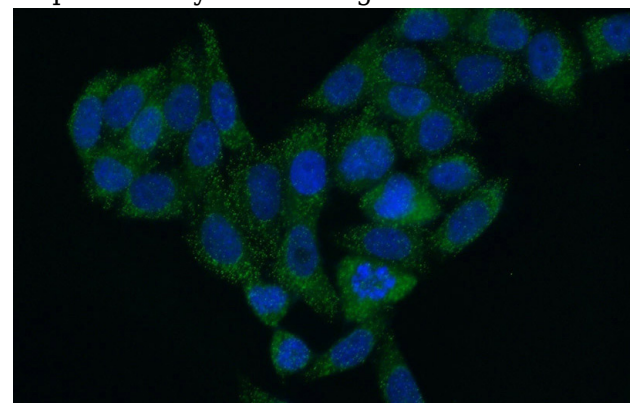
Applications

ELISA, WB, IF, IP

Dilutions

Recommended Dilution:

WB: 1:200-1:2000



Immunofluorescent analysis of (10% Formaldehyde) fixed HepG2 cells using Catalog

SCP2 antibody



Catalog Number: 115016

No:115016(SCP2 Antibody) at dilution of 1:50 and Alexa Fluor 488-conjugated AffiniPure Goat Anti-Rabbit IgG(H+L)