

SCP2 antibody



Catalog Number: 115015

Product name

SCP2 antibody

Specificity

Human, Mouse, Rat; other species not tested.

Antibody description

SCP2 Rabbit Polyclonal antibody. Positive WB detected in NIH/3T3 cells, A2780 cells, mouse liver tissue, mouse ovary tissue. Positive IF detected in HeLa cells. Observed molecular weight by Western-blot: 35kd, 44kd, 52kd

Preparation

This antibody was obtained by immunization of SCP2 recombinant protein (Accession Number: NM_001007098). Purification method: Antigen affinity purified.

Formulation

PBS with 0.02% sodium azide and 50% glycerol pH 7.3.

Storage

Store at -20°C. DO NOT ALIQUOT

Clonality

Polyclonal

Ig Type

Rabbit IgG

Applications

ELISA, WB, IF

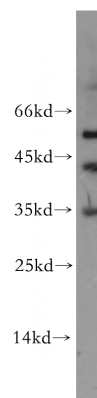
Dilutions

Recommended Dilution:

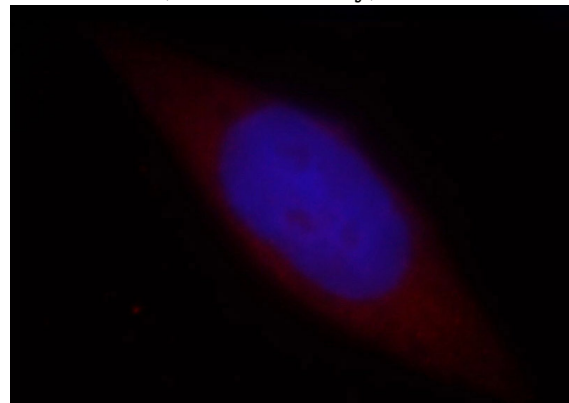
WB: 1:1000-1:10000

IF: 1:10-1:100

Validations



NIH/3T3 cells were subjected to SDS PAGE followed by western blot with Catalog No:115015(SCPX antibody) at dilution of 1:2000



Immunofluorescent analysis of HeLa cells, using SCP2 antibody Catalog No:115015 at 1:25 dilution and Rhodamine-labeled goat anti-rabbit IgG (red). Blue pseudocolor = DAPI (fluorescent DNA dye).