

SCLY antibody

Catalog Number: 115000

Product name

SCLY antibody

Specificity

Human, Mouse, Rat; other species not tested.

Antibody description

SCLY Rabbit Polyclonal antibody. Positive IHC detected in human breast cancer tissue. Positive WB detected in mouse liver tissue, mouse heart tissue. Observed molecular weight by Western blot: 48kd

Preparation

This antibody was obtained by immunization of SCLY recombinant protein (Accession Number: NM_016510). Purification method: Antigen affinity purified.

Formulation

PBS with 0.1% sodium azide and 50% glycerol pH 7.3.

Storage

Store at -20°C. DO NOT ALIQUOT

Clonality

Polyclonal

Ig Type

Rabbit IgG

Applications

ELISA, WB, IHC

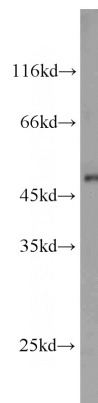
Dilutions

Recommended Dilution:

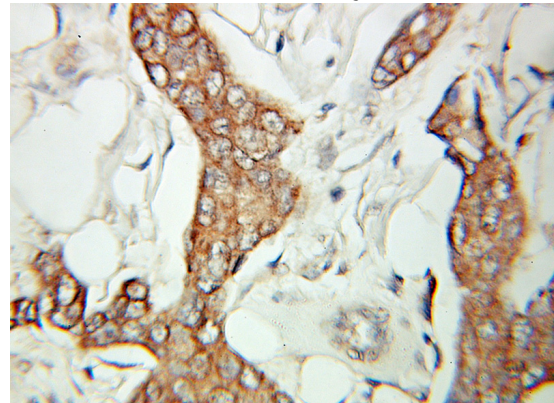
WB: 1:200-1:2000

IHC: 1:20-1:200

Validations



mouse liver tissue were subjected to SDS PAGE followed by western blot with Catalog No:115000(SCLY antibody) at dilution of 1:500



Immunohistochemical of paraffin-embedded human breast cancer using Catalog No:115000(SCLY antibody) at dilution of 1:100 (under 10x lens)