

SASS6 antibody

Catalog Number: 114974

Product name

SASS6 antibody

IP: 1:500-1:5000

IHC: 1:20-1:200

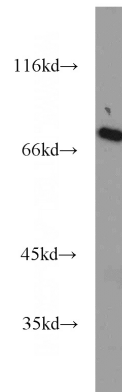
Specificity

Human; other species not tested.

Validations

Antibody description

SASS6 Rabbit Polyclonal antibody. Positive IHC detected in human testis tissue, human kidney tissue. Positive IP detected in HeLa cells. Positive WB detected in HeLa cells, human testis tissue, MCF7 cells. Observed molecular weight by Western-blot: 70-74 kDa



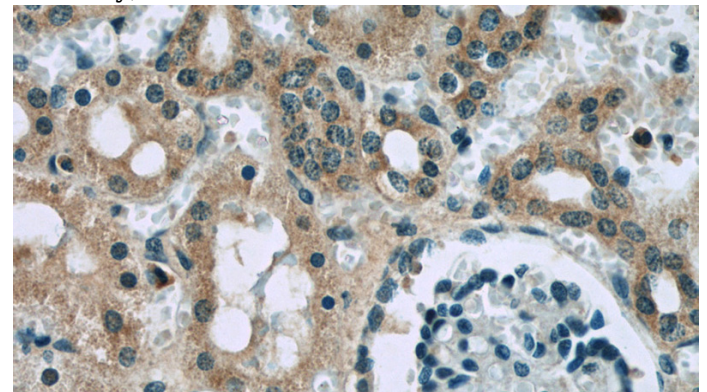
Preparation

This antibody was obtained by immunization of SASS6 recombinant protein (Accession Number: NM_001304829). Purification method: Antigen affinity purified.

HeLa cells were subjected to SDS PAGE followed by western blot with Catalog No:114974(SASS6 antibody) at dilution of 1:1000

Formulation

PBS with 0.02% sodium azide and 50% glycerol pH 7.3.



Storage

Store at -20°C. DO NOT ALIQUOT

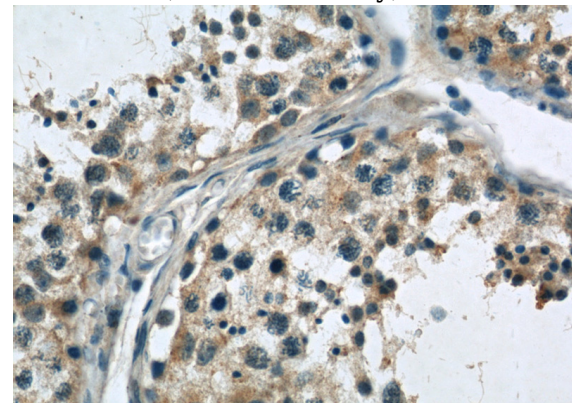
Clonality

Polyclonal

Immunohistochemistry of paraffin-embedded human kidney slide using Catalog No:114974(SASS6 Antibody) at dilution of 1:50

Ig Type

Rabbit IgG



Applications

ELISA, WB, IHC, IP

Dilutions

Recommended Dilution:

WB: 1:500-1:5000

Immunohistochemistry of paraffin-embedded human testis slide using Catalog

SASS6 antibody

Catalog Number: 114974

No:114974(SASS6 Antibody) at dilution of 1:50

IP Result of anti-SASS6 (IP:Catalog No:114974, 4ug; Detection:Catalog No:114974 1:1000) with HeLa cells lysate 600ug.

