

S100P antibody



Catalog Number: 114967

Product name

S100P antibody

WB: 1:500-1:5000

IHC: 1:20-1:200

Specificity

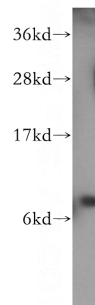
Human; other species not tested.

IF: 1:20-1:200

Validations

Antibody description

S100P Rabbit Polyclonal antibody. Positive FC detected in HepG2 cells. Positive IF detected in HeLa cells, HepG2 cells. Positive IHC detected in human lung cancer tissue, human breast cancer tissue, human lung tissue. Positive WB detected in HeLa cells. Observed molecular weight by Western-blot: 9 kDa



Preparation

This antibody was obtained by immunization of S100P recombinant protein (Accession Number: NM_005980). Purification method: Antigen affinity purified.

HeLa cells were subjected to SDS PAGE followed by western blot with Catalog No:114967(S100P antibody) at dilution of 1:1000

Formulation

PBS with 0.1% sodium azide and 50% glycerol pH 7.3.

Storage

Store at -20°C. DO NOT ALIQUOT

Clonality

Polyclonal

Ig Type

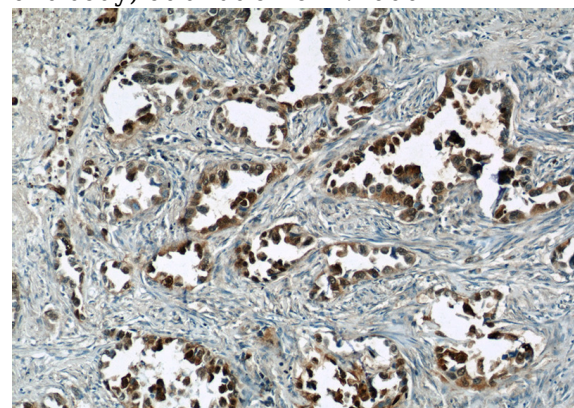
Rabbit IgG

Applications

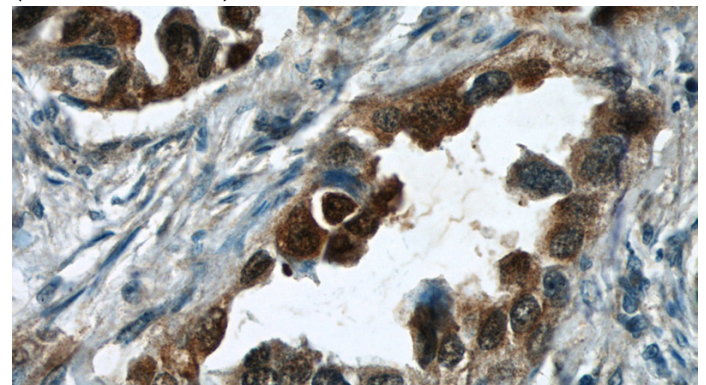
ELISA, IHC, WB, FC, IF

Dilutions

Recommended Dilution:



Immunohistochemical of paraffin-embedded human lung cancer using Catalog No:114967(S100P antibody) at dilution of 1:50 (under 10x lens)

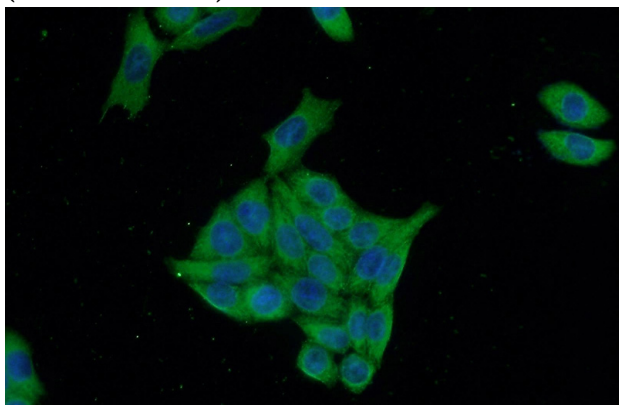


S100P antibody



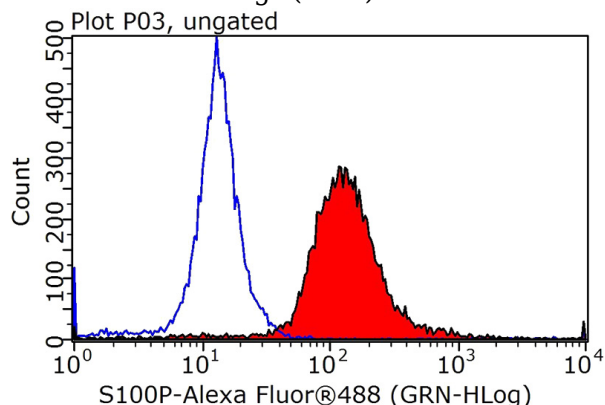
Catalog Number: 114967

Immunohistochemical of paraffin-embedded human lung cancer using Catalog No:114967(S100P antibody) at dilution of 1:50 (under 40x lens)



Immunofluorescent analysis of HeLa cells using Catalog No:114967(S100P Antibody) at dilution of 1:50 and Alexa Fluor 488-conjugated AffiniPure

Goat Anti-Rabbit IgG(H+L)



1X10⁶ HepG2 cells were stained with 0.2ug S100P antibody (Catalog No:114967, red) and control antibody (blue). Fixed with 90% MeOH blocked with 3% BSA (30 min). Alexa Fluor 488-conjugated AffiniPure Goat Anti-Rabbit IgG(H+L) with dilution 1:1000.