

Ryanodine Receptor 2 antibody



Catalog Number: 114949

Product name

Ryanodine Receptor 2 antibody

IHC: 1:50-1:500

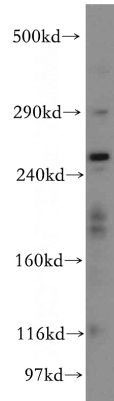
Specificity

Human, Mouse; other species not tested.

Validations

Antibody description

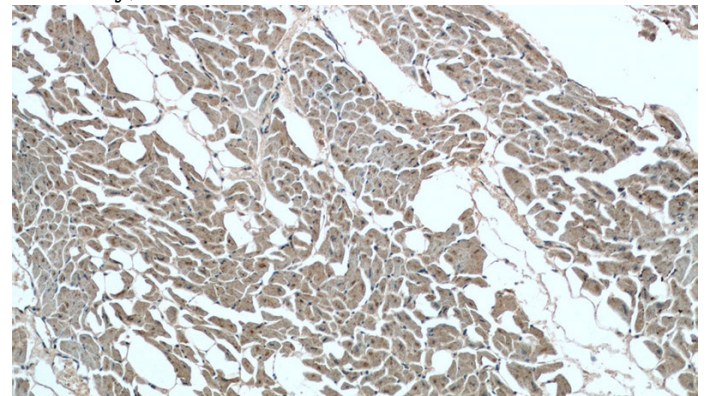
Ryanodine Receptor 2 Rabbit Polyclonal antibody. Positive WB detected in HeLa cells, human brain tissue, human placenta tissue, mouse brain tissue. Positive IHC detected in human heart tissue, human brain tissue, human placenta tissue, human skeletal muscle tissue. Observed molecular weight by Western-blot: 240-250 kDa



HeLa cells were subjected to SDS PAGE followed by western blot with Catalog No:114949(RYR2 antibody) at dilution of 1:500

Preparation

This antibody was obtained by immunization of Peptide (Accession Number: NM_001035). Purification method: Antigen affinity purified.



Formulation

PBS with 0.02% sodium azide and 50% glycerol pH 7.3.

Immunohistochemistry of paraffin-embedded human heart tissue slide using Catalog No:114949(RYR2 Antibody) at dilution of 1:200 (under 10x lens).

Storage

Store at -20°C. DO NOT ALIQUOT

Clonality

Polyclonal

Ig Type

Rabbit IgG

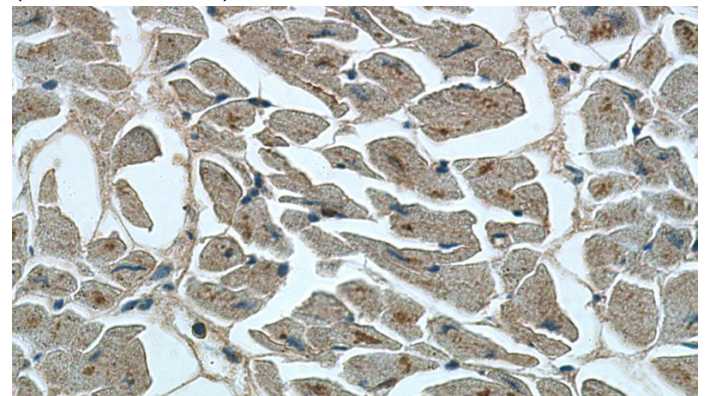
Applications

ELISA, WB, IHC

Dilutions

Recommended Dilution:

WB: 1:500-1:5000



Immunohistochemistry of paraffin-embedded human heart tissue slide using Catalog No:114949(RYR2 Antibody) at dilution of 1:200

Ryanodine Receptor 2 antibody



Catalog Number: 114949

(under 40x lens).