

# RRP36 antibody



Catalog Number: 114928

## Product name

RRP36 antibody

## Immunogen

[Human C6orf153 Recombinant protein \(His tag\)](#)

## Specificity

Human; other species not tested.

## Antibody description

RRP36 Rabbit Polyclonal antibody. Positive WB detected in MCF-7 cells, HEK-293 cells. Observed molecular weight by Western-blot: 30-40 kDa

## Preparation

This antibody was obtained by immunization of RRP36 recombinant protein (Accession Number: NM\_033112). Purification method: Antigen affinity purified.

## Formulation

PBS with 0.1% sodium azide and 50% glycerol pH 7.3.

## Storage

Store at -20°C. DO NOT ALIQUOT

## Clonality

Polyclonal

## Ig Type

Rabbit IgG

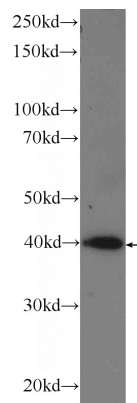
## Applications

ELISA, WB

## Dilutions

Recommended Dilution:  
WB: 1:200-1:2000

## Validations



MCF-7 cells were subjected to SDS PAGE followed by western blot with Catalog No:114928(C6orf153 Antibody) at dilution of 1:600