

# RRM1-Specific antibody



Catalog Number: 114924

## Product name

RRM1-Specific antibody

## Specificity

Human, Mouse, Rat; other species not tested.

## Antibody description

RRM1-Specific Rabbit Polyclonal antibody.  
Positive IF detected in HepG2 cells. Positive WB detected in A549 cells, HEK-293 cells, HeLa cells.  
Observed molecular weight by Western-blot: 80-90 kDa

## Preparation

This antibody was obtained by immunization of Peptide (Accession Number: NM\_001033).  
Purification method: Antigen affinity purified.

## Formulation

PBS with 0.02% sodium azide and 50% glycerol pH 7.3.

## Storage

Store at -20°C. DO NOT ALIQUOT

## Clonality

Polyclonal

## Ig Type

Rabbit IgG

## Applications

ELISA, WB, IF

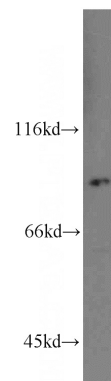
## Dilutions

Recommended Dilution:

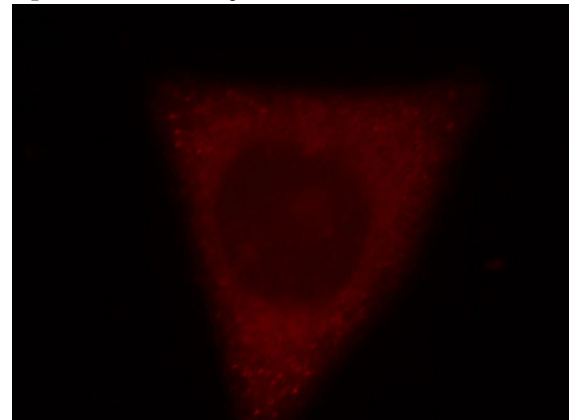
WB: 1:200-1:1000

IF: 1:10-1:100

## Validations



A549 cells were subjected to SDS PAGE followed by western blot with Catalog No:114924(RRM1-Specific antibody) at dilution of 1:100



Immunofluorescent analysis of HepG2 cells, using RRM1 antibody Catalog No:114924 at 1:25 dilution and Rhodamine-labeled goat anti-rabbit IgG (red).