

# RPLP0 antibody

Catalog Number: 114905

## Product name

RPLP0 antibody

IP: 1:200-1:2000

IHC: 1:20-1:200

## Specificity

Human, Mouse, Rat; other species not tested.

## Antibody description

RPLP0 Rabbit Polyclonal antibody. Positive IHC detected in human colon cancer tissue. Positive WB detected in HeLa cells, rat liver tissue. Positive IP detected in HeLa cells. Observed molecular weight by Western-blot: 34 kDa

## Preparation

This antibody was obtained by immunization of RPLP0 recombinant protein (Accession Number: NM\_053275). Purification method: Antigen affinity purified.

## Formulation

PBS with 0.1% sodium azide and 50% glycerol pH 7.3.

## Storage

Store at -20°C. DO NOT ALIQUOT

## Clonality

Polyclonal

## Ig Type

Rabbit IgG

## Applications

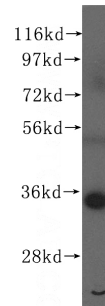
ELISA, WB, IHC, IP

## Dilutions

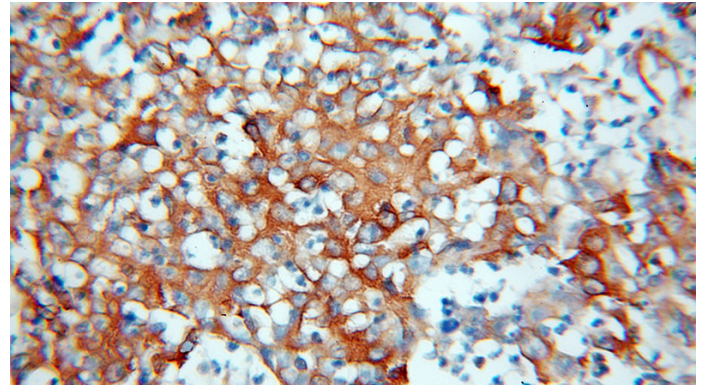
Recommended Dilution:

WB: 1:1000-1:10000

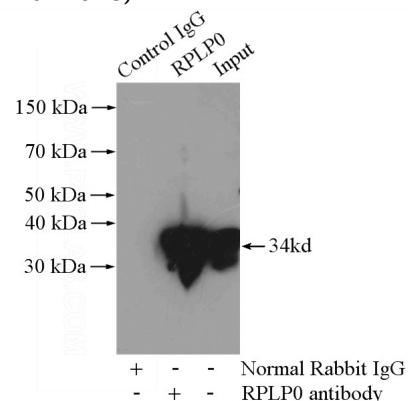
## Validations



HeLa cells were subjected to SDS PAGE followed by western blot with Catalog No:114905(RPLP0 antibody) at dilution of 1:300



Immunohistochemical of paraffin-embedded human colon cancer using Catalog No:114905(RPLP0 antibody) at dilution of 1:100 (under 10x lens)



IP Result of anti-RPLP0 (IP:Catalog No:114905,

# RPLP0 antibody



Catalog Number: 114905

---

4ug; Detection:Catalog No:114905 1:500) with HeLa cells lysate 4000ug.