

RPL5 antibody

Catalog Number: 114897

Product name

RPL5 antibody

IHC: 1:20-1:200

IF: 1:20-1:200

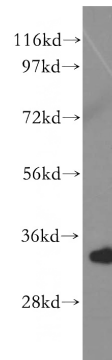
Specificity

Human, Mouse, Rat; other species not tested.

Antibody description

RPL5 Rabbit Polyclonal antibody. Positive WB detected in HepG2 cells, human liver tissue. Positive IF detected in HepG2 cells. Positive IHC detected in human liver cancer tissue, human kidney tissue. Observed molecular weight by Western-blot: 34 kDa

Validations



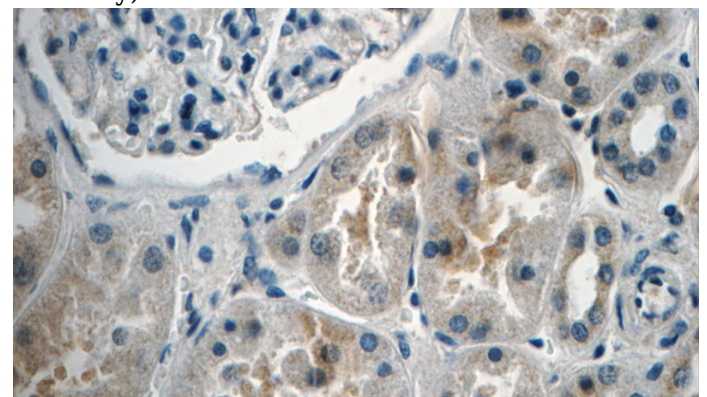
Preparation

This antibody was obtained by immunization of RPL5 recombinant protein (Accession Number: BC001882). Purification method: Antigen affinity purified.

HepG2 cells were subjected to SDS PAGE followed by western blot with Catalog No:114897(RPL5 antibody) at dilution of 1:500

Formulation

PBS with 0.02% sodium azide and 50% glycerol pH 7.3.



Storage

Store at -20°C. DO NOT ALIQUOT

Clonality

Polyclonal

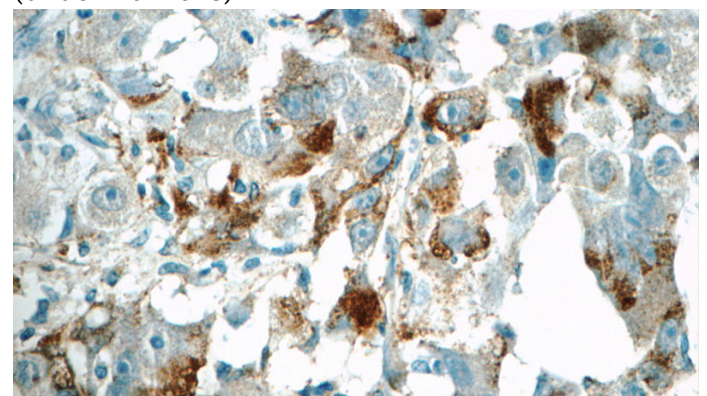
Immunohistochemistry of paraffin-embedded human kidney tissue slide using Catalog No:114897(RPL5 Antibody) at dilution of 1:50 (under 40x lens)

Ig Type

Rabbit IgG

Applications

ELISA, WB, IHC, IF



Dilutions

Recommended Dilution:

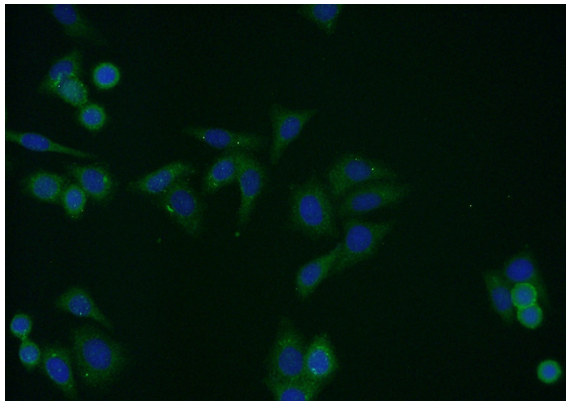
WB: 1:200-1:2000

Immunohistochemistry of paraffin-embedded

RPL5 antibody

Catalog Number: 114897

human liver cancer tissue slide using Catalog No:114897(RPL5 Antibody) at dilution of 1:50 (under 40x lens)



Immunofluorescent analysis of HepG2 cells using Catalog No:114897(RPL5 Antibody) at dilution of 1:50 and Alexa Fluor 488-conjugated AffiniPure Goat Anti-Rabbit IgG(H+L)