

# RPL39L antibody



Catalog Number: 114896

## Product name

RPL39L antibody

## Specificity

Human; other species not tested.

## Antibody description

RPL39L Rabbit Polyclonal antibody. Positive WB detected in HL-60 cells. Positive IHC detected in human testis tissue. Observed molecular weight by Western-blot: 6 kDa

## Preparation

This antibody was obtained by immunization of RPL39L recombinant protein (Accession Number: NM\_052969). Purification method: Antigen affinity purified.

## Formulation

PBS with 0.1% sodium azide and 50% glycerol pH 7.3.

## Storage

Store at -20°C. DO NOT ALIQUOT

## Clonality

Polyclonal

## Ig Type

Rabbit IgG

## Applications

ELISA, WB, IHC

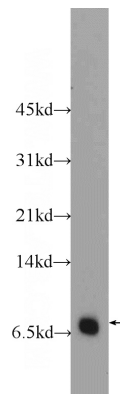
## Dilutions

Recommended Dilution:

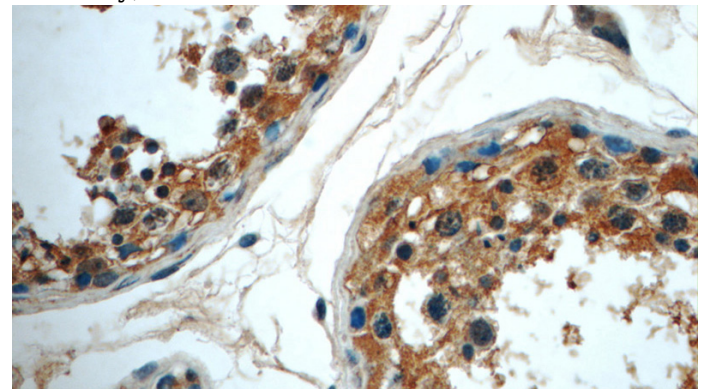
WB: 1:200-1:2000

IHC: 1:20-1:200

## Validations



HL-60 cells were subjected to SDS PAGE followed by western blot with Catalog No:114896(RPL39L Antibody) at dilution of 1:600



Immunohistochemistry of paraffin-embedded human testis tissue slide using Catalog No:114896(RPL39L Antibody) at dilution of 1:50 (under 40x lens)